

Parent Welcome Evening

10.7.2023



Who's who

Mr Hartley – Head Teacher
Miss Bliss – Deputy Head Teacher

Miss Cheeseman – Head of Y7

Mrs Benham – SENCo

Mr Groves, Mr Spicer, Mr McEvoy, Ms Priest – Year 7 Tutors

Mr Andy Hartley



Congratulations and 'Thank you'

GCSE results 2022

- 4+ up from 49% in 2019 to 73% in 2022
- 5+ up from 29% to 49%
- Our Progress 8 score at 0.14



OFSTED

- May 10th and 11th 2022
- Rigorous, broad and exacting
- The culmination of a long period of hard work
- A benchmark for us to use and move further forward from
- The journey continues...



Teaching

- We have a clear 'house style' in the classroom
- Staff are expected to adhere to and work around our MECE principles of teaching
- We provide training and support for staff each week around these ideas.
- Our results support that our teaching style is effective



Behaviour

- Pupils are responsible and respectful.
- Behaviour and attitudes are positive.
- Routines and expectations are clear.
- Pupils are happy and enjoy school.
- We never stop thinking about behaviour

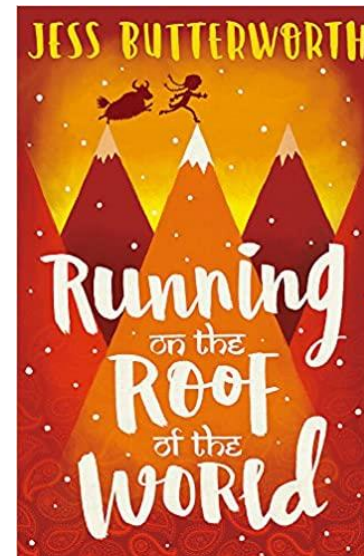


Reading

- We read...
- In tutor time, in lessons, in the library.
- We support students to be better readers
- Literacy skills are the key to so much success in life



We strongly promote reading with all students and as such we will be gifting a copy of 'Running on the Roof of the World' to all students to read over the summer holidays. The author will be visiting the school in September!



Extra-curricular

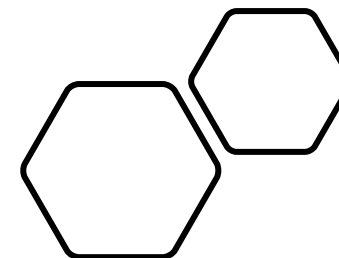
- There is an extensive range of extra-curricular activities on offer.
- Get stuck in!
- Duke of Edinburgh, Sport, Theatre, Prom, Go Ape, House Chess, Sports Day, House Music, The Tower of London- a busy two weeks!



Safety and bullying

- Pupils feel very safe at this school.
- They are tolerant and accepting of others.
- Pupils say that any instances of unkindness or bullying are always followed up.





“

The achievements of an
organization are the
results of the combined
effort of each individual.

—
VINCE LOMBARDI

GRACIOUSQUOTES.COM

Miss Bliss
Deputy Headteacher

Please ensure you have collected your named pack which includes:

- Parent handbook
- Parent Pay registration details
- Tutor group allocation

At MECE we proudly offer a broad and balanced curriculum in Year 7 and throughout the school.

Students will follow each of the subjects below in Year 7:

English, Maths, Science, French, Geography, History, RE, Computing, Art, Design & Technology, Food Technology, Drama, Music, PE & PHSE

More information on what is studied in each term in each subject can be found on our website

Curriculum	Subject	Year 7 Time allocation (Hours/fortnight)
Core	English	8
	Mathematics	8
	Science	7
EBACC	French	3
	Geography	3
	History	3
Extension	Art	2
	Computing	2
	Drama	2
	Music	2
	PSHE	2
	Physical Education	2
	Religious Education	4
	Technology (3D design / Food)	2
TOTAL		50

The School Day has 5 periods and a designated tutor period.
There is a short break mid-morning (11.10am) and longer lunch break between (1.30pm).
We run a 2-week timetable (each week will look slightly different!)

A typical Year 7 student timetable might look like this.

The period within the day

The Days of week (with an indication of week 1 / week2)

1Mon	1Tues	1Wed	1Thur	1Fri
Mathematics 1200 1215	French 1200 1215	Science 1200 1215	History 1200 1215	Art 1200 1215
English 1230 1245	Science 1230 1245	Mathematics 1230 1245	Geography 1230 1245	Mathematics 1230 1245
Art 1260 1275	Mathematics 1260 1275	Science 1260 1275	Mathematics 1260 1275	Mathematics 1260 1275
Science 1290 1305	Mathematics 1290 1305	Science 1290 1305	Mathematics 1290 1305	Mathematics 1290 1305
Geography 1320 1335	Mathematics 1320 1335	Science 1320 1335	Mathematics 1320 1335	Mathematics 1320 1335

2Mon	2Tues	2Wed	2Thur	2Fri
Science 1350 1365	English 1350 1365	Mathematics 1350 1365	History 1350 1365	French 1350 1365
English 1380 1395	Computing 1380 1395	Science 1380 1395	English 1380 1395	Mathematics 1380 1395
Mathematics 1410 1425	French 1410 1425	Science 1410 1425	Mathematics 1410 1425	Mathematics 1410 1425
Mathematics 1440 1455	Mathematics 1440 1455	Science 1440 1455	Mathematics 1440 1455	Mathematics 1440 1455
Mathematics 1470 1485	Mathematics 1470 1485	Science 1470 1485	Mathematics 1470 1485	Mathematics 1470 1485

English
PZG Enl

Subject name

Classroom

The first day in September (Tuesday 5th) will look a little different – we will send out communication to you prior to the start of the academic year, to keep you informed.

Lines of Communication

As a student the first point of contact will be the tutor. **Students see them everyday**

Students are encouraged to speak to their class teachers

Students will have regular contact with their Head of Year

If students need some additional support this is offered through the Inclusion Team – students can use the drop in facility during lunch or they may be referred for more targeted / structured support by a teacher

As a parent we encourage the first point of contact to also be the tutor – who, certainly in the first few weeks, will be the person who knows your child the best. We encourage email contact as all our tutors also carry a teaching timetable.

If your child is unwell and absent from school we ask you to contact the *absence line* (phone or email) on each day of absence

You are welcome to contact individual subject staff too via email

Whilst we make every effort to respond as quickly as possible, the school has a policy to respond within 3 working days.

Key contact details can be found in the handbook

Mrs Benham
Assistant Headteacher

Inclusion and Pastoral Structure & Support

In-school provision

Head of Year

Inclusion Team (including SENCo)

Homework Club

Mentoring

ELSA

External Agencies:

Youth work based in school

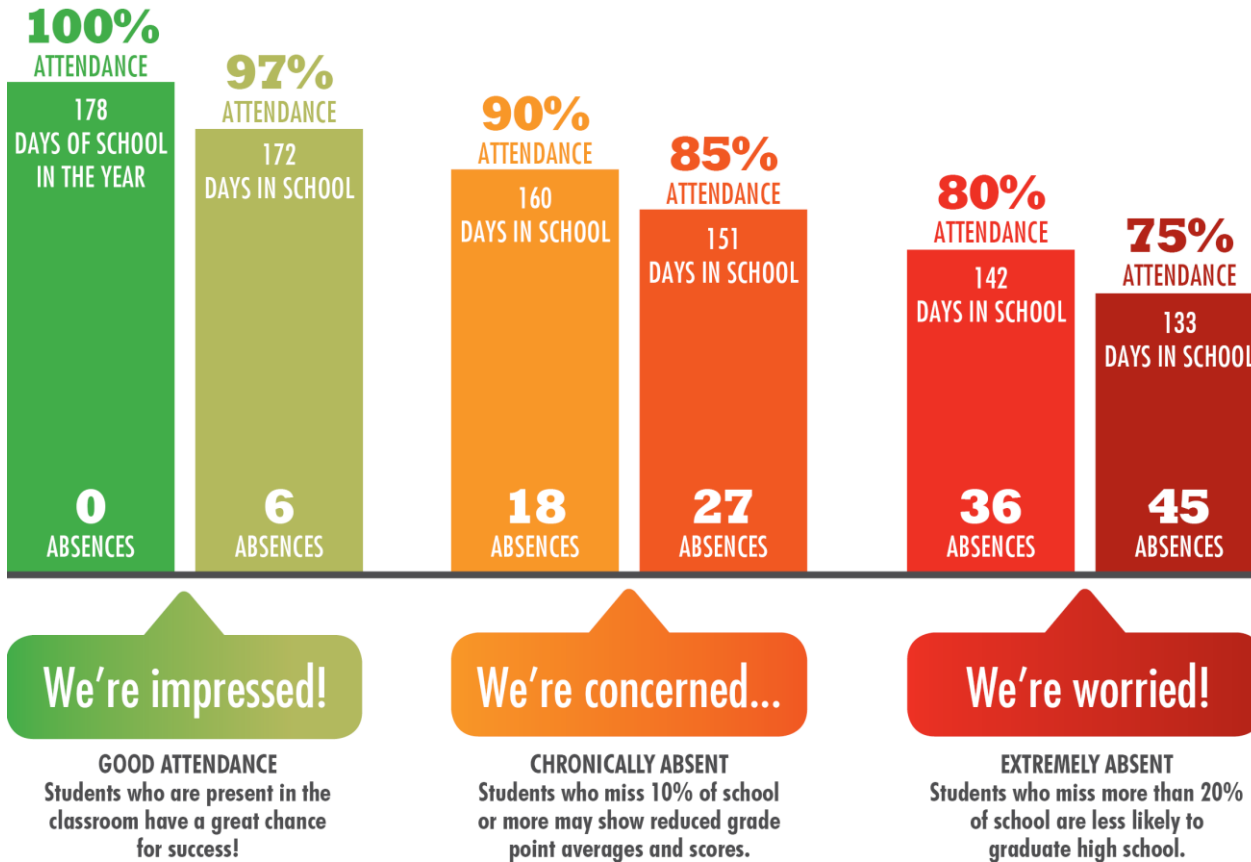
Mentoring

Pathways support

For students who are entitled to Free School Meals there will be additional financial support available to parents through the year at the discretion of the SLT – this might include support for uniform, trips or curriculum resources

A few words from SENCo (what we have done already, what we will continue to do in September and beyond)

Attendance



Below 90% attendance = on average ½ day missed every week..... Equates to 4 weeks over a school year.

In five years of school that's around half a year's absence

- School success starts with attendance. Every school day counts
- If your child is absent from school, we ask that you contact us each morning (*details of the absence email contact can be found in the handbook*)
- MECE operates a 'first day calling' policy
- Please book routine GP, Dentist, Orthodontist appointments outside school hours
- We regularly report on student attendance. Identifying patterns of absence is a helpful way for us to assess pastoral issues.
- Our aim is for all students to record attendance above 96%

Miss Cheeseman
Head of Year 7

Miss Cheeseman

My Role:

- Work closely with: tutors, class teachers & inclusion
- Ensure correct academic/SEN/Pastoral support is in place
- Every opportunity to be happy and progress

My Expectations

- Attend school
- Be punctual
- Be prepared
- High effort
- Polite/Respectful
- Seek support
- Get involved

What you can expect:

- Clear communication home
- Clear & consistent routines and expectations
- Tutor & Head of Year who really know the students
- Celebrating the success
- Team mentality

Uniform

Please help us maintain our high standards:

- Uniform (including shoes, not trainers)
- Jewellery (particularly in terms of earrings)
- Make Up & Nail Varnish are not permitted
- Attendance and Punctuality
- Tools For Learning (including a reading book)
- Equipment (PE Kit / Food Tech ingredients etc)
- Homework

There is support available to cover the cost of key items of uniform. Details of how to access this support will follow next week



See Parent Handbook

Tools for Learning

The MECE Tools for Learning



- Reading book
- Hairband
- Student Planner

Transition Days

Rotate in **Tutor Groups**

Thursday
Arrive at front of school:
<ul style="list-style-type: none">Register in main hall
Assembly
Tutor Time
<ul style="list-style-type: none">Ice breakersSchool tour
Taster Session x1
Break
Taster Sessions x 3
Lunch
Tutor Time
Return to Main Hall
End of Day: 3.10pm

School uniform

Thursday Sessions:

English
French
Science
Maths

Rotate in **Houses**

Friday
Arrive into school – head into the Quad
Tutor time - register
Session 1
Session 2
Break
Session 3
Session 4
Lunch
Singing Practice
Parents/Carers invited in for: Assembly Celebration & Big Sing at 2.45pm
End of Day: 3.10pm

PE Kit

Friday Sessions:

PE
Music
Character Education
House Welcome

Key information Reminders

- Arrive at MECE from 8.30am, **for an 8.45am start**
- **Thursday:** school uniform (Primary school)
- **Friday:** PE Kit (primary school)
- Bring a packed lunch for both days (break time snack), bottle of water (those in receipt of Free School Meals will be given lunch if needed)
- Year 6 students can use the school buses for free
- Please ensure you have let school know if your child is planning on walking home
- Please contact us prior to Thursday to inform us of any **medication** / emergency medication your child needs. This will need to be in a labelled bag and given to reception (or your child can give this to their tutor in the morning)

Gabrielle Petford & Henry Murtagh
Head Students

And finally

Headteacher Challenge

To complete over the Summer break.

The challenge is to design a creative piece titled 'All About Me'.

This could be a poster, a poem a painting, or anything else you would like to make. It could include your favourite things, photographs or memories of places you have been.



Key Dates for September

Tuesday 5th September – start of term
(Year 7 and 11 only)

Thursday 26th September – Y7 Parents
Welcome Evening (6pm)

- You are now going to go and meet your son / daughter's tutor and see their tutor room for next year.
- We will be available at the end of your tutor session for any last questions you might have.

**THANKS
FOR
COMING**