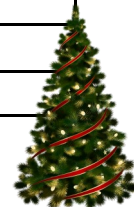


STUDENT bulletin

05, December 2022 – Week 1

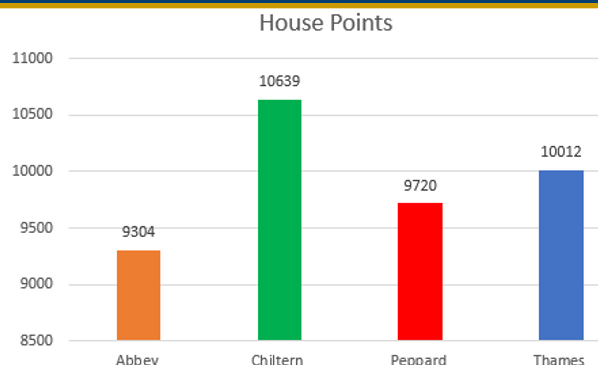
Monday, 05 December	
Lunchtime	School Show Singing Rehearsal, Mrs Brown, Music Room
Lunchtime	Run Club, Miss Green, School Field (All Years)
Lunchtime	Badminton, Sports Hall (All Years)
Lunchtime	Puzzle Pirates—Year 7 & 8, M3
Tuesday, 06 December	Year 7 & 8 assembly, Main Hall
Lunchtime	Year 7 Boys Indoor Football, Sports Hall
Afterschool 4.15pm	Separate Science Lesson—Year 11
Afterschool 4.30pm	Twilight GCSE Dance Year 11, Dance Studio
Afterschool 4.15pm	Homework Club, Library
Afterschool 4.15pm	Girls & Boys Football Practice (All Years)
Wednesday, 07 December	Year 9, 10 & 11 Assembly, Main Hall
Lunchtime	Maths Past Paper Practice (Year 11) M1
Lunchtime	Maths Drop-in (Year 11) M4
Lunchtime	Space Club, Mrs Hardman, S1
Lunchtime	Girls Indoor Football, Sports Hall (All Years)
Lunchtime	Eco Club, Miss Kirby, S2
Afterschool—4.15pm	Boxin2 Fitness (Sign up only)
Afterschool - 5pm	School Show Rehearsals—Whole Cast
Afterschool - 4.30pm	Twilight GCSE Dance (Year 10) Dance Studio
Afterschool—4:15pm	Maths Drop-in (All Years) M4
Afterschool—4:15pm	Homework Club, Library
Afterschool—16.30-19.30	Year 7, Meet The Tutor
Fixture Pickup @ 5.15pm	Year 10/11 girls football @ Wallingford School
Thursday, 08 December	
School Day	Year 9 Science Trip
Lunchtime	S.T.E.M Club, S1, Miss Swayne
Lunchtime	History Club, Miss Shepherd HUMS2
Lunchtime	Year 8/9 Indoor Football Club, Sports Hall
Afterschool - 5pm	School Show Rehearsals—Whole Cast
Afterschool—4:15pm	KS3 Debate Club, Mr Groves, EN1
Afterschool—4:15pm	Latin Club, Miss Green, L4
Afterschool—4:15pm	Maths GCSE Higher Class, M1
Afterschool—4:15pm	Homework Club, Library
Afterschool 4.15pm	Latin Club, Miss Green L4
Fixture, Pickup @ 6pm	Year 7, girls Football @ Wallingford School
Friday, 09 December	HAP Assembly
Lunchtime	Year 10/11 football, Sports Hall
Lunchtime	Drama Club, Drama Studio
Lunchtime	Amnesty International, Mrs Hardman



STAR OF The Week

House Stars of the Week

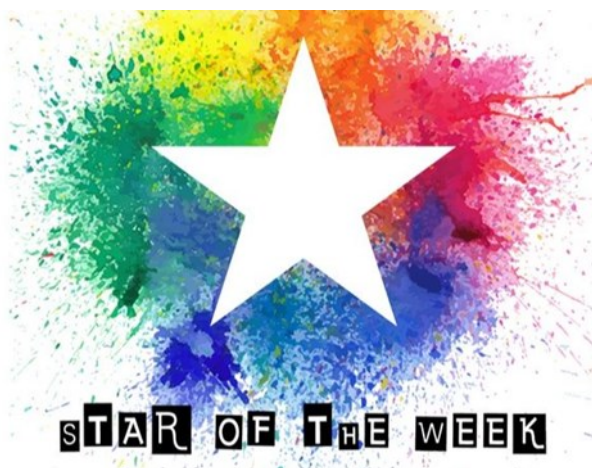
Peppard	Lilly Ann K 7D
Thames	Poppy Ann 7D
Chiltern	Kitty J 7D
Abbey	Amanda D-G 9A



MECE STARS

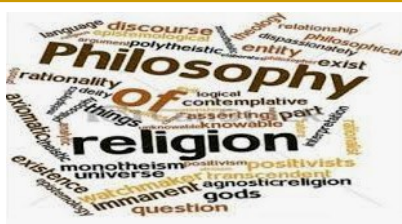
Ebony M, for always trying her hardest in every lesson and always has a smile on her face!

Daniel C, amazingly enthusiastic and polite, always cheers me up!



Ashton H, Ashton is such a lovely, polite and conscientious pupil, he is a total star!

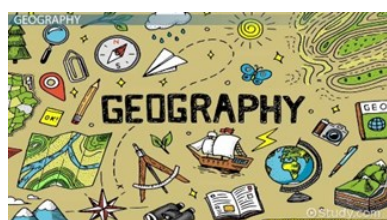
HUMS STAR OF THE WEEK



Imogen M, for her hard work & focus in lessons!

KS3: Millie B, for her fantastic work on the Reading Mural!

KS4: Millie M, for her amazing PPE!



KS3: Lucas W, for his fab work in geography!

KS4: Sophie G, for her focus and effort in all lessons!





YOUR
SCHOOL
LOTTERY



MAIDEN ERLEGH
CHILTERN EDGE

WE'VE LAUNCHED A LOTTERY

Buy your tickets now to
help our fundraising

- Tickets cost just £1
- All profits go to our school
- Local cash prize every week
- Chance to win the £25,000 jackpot!
- Drawn every Saturday at 8pm



To start supporting, visit:

yourschoollottery.co.uk

and search for: **Maiden Erlegh Chiltern Edge**



Supporters must be 16 years of age or older



WEEKLY events

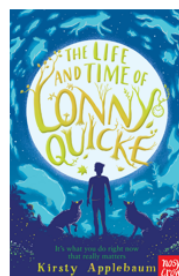


Author of The Week

KIRSTY APPLEBAUM



'The Life and Time of Lonny Quicke' was runner up in the Teach Primary Book Awards 2021.



In Lonny Quicke, he can save lives with the touch of his hand.

A Troofriend is one that never lies or bullies...but they aren't real either.

The Middler is set during the Quiet wars, where dirty wanderers roam.

All books which prompt the reader to think, 'what would I do?' as they are reading, by dealing with issues that we might not have considered before!

If you like **Christopher Edge** or **SF Said**, you'll love these books!

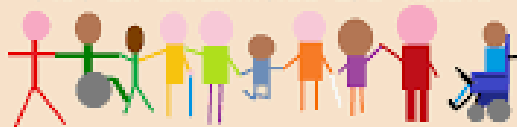
Books are **AMAZING!** Every time you read one it leaves you a little bit of bookish magic inside you that stays with you forever. Happy reading!

This Week's Assembly

Disability Awareness Mrs Benham

Disability Awareness

Not all disabilities are visible



Everyone is different, but
we're all human

© Allina Speech

© Allina Speech





WEEKLY events



MECE Menu

MONDAY	TUESDAY	WEDNESDAY	THURSDAY	FRIDAY
Chilli Con Carne served with Rice, Sweetcorn & Sour Cream	Roast Chicken & Yorkshire Pudding served with Roast Potatoes, Carrots & Gravy	Spaghetti Bolognese Served with Garlic Bread & Sweetcorn	Pork Sausages served with Mashed Potatoes, Green Beans & Gravy	Jumbo Fish Fingers served with Fries, Peas & Lemon Wedge
Mixed Bean Chilli served with Rice & Sour Cream	Quorn Cottage Pie served with Broccoli	Butternut Squash & Bean Enchiladas served with Sweetcorn	Quorn Sausages served with Mashed Potatoes, Green Beans & Gravy	Spicy Bean Burger served with Peas & Fries
Pasta Bar with Bolognese or Tomato Sauce	Pasta Bar with Bolognese or Tomato Sauce	Pasta Bar with Bolognese or Tomato Sauce	Pasta Bar with Bolognese or Tomato Sauce	Pasta Bar with Bolognese or Tomato Sauce
Jacket Potatoes with Beans, Tuna or Bolognese	Jacket Potatoes with Beans, Tuna or Bolognese	Jacket Potatoes with Beans, Tuna or Bolognese	Jacket Potatoes with Beans, Tuna or Bolognese	Jacket Potatoes with Beans, Tuna or Bolognese
Vanilla Sponge served with Custard	Apple & Cinnamon Crumble served with Custard	Jam & Coconut Sponge served with Custard	Creamy Rice Pudding served with Honey	Fruit Pie served with Custard
Baguettes Cheese, Chicken Mayo, Egg Mayonnaise, Ham, Ham & Cheese or Tuna Mayonnaise	Daily Options A Selection of Salad & Plain Bread will be available Daily.		Cold Desserts Fruit Pots, Whole Fruit, Yoghurts & Jelly available daily.	



MAIDEN ERLEGH
CHILTERN EDGE

We Are a Nut Free School

Please be mindful that nuts and traces of nuts can be found in many items including: Chocolate/sandwich spread, satay chicken, chocolate bars/boxes, and biscuits.



A Reminder:

No energy, sugary or fizzy drinks in school.

They are bad for your health and for your concentration in lessons.

If seen they will be confiscated.



Lucozade Energy Original	Boost	Tesco Blue Spark	Red Thunder	Blue Bear	Energy	Monster Rehab	KK Energy
380ml	250ml	250ml	250ml	250ml	250ml	500ml	250ml*
4	3	3	3	3	3	3	1
17g	12g	12g	12g	12g	11g	11g	4g
46mg	75mg	75mg	75mg	75mg	75mg	160mg	75mg

1 teaspoon = 4g sugar

1 cup of espresso = 80mg caffeine

Data collected from various sources





NOTICE board



Advance Notice

13 & 15 December	School Show Evening Performance
14, December	Student Christmas Lunch
16, December	End of Term School Day finishes at 12:30pm

Performing Arts



**Chiltern Edge
Group LAMDA Classes
in Acting & Public
Speaking**

LAMDA **RABBLE
LAMDA**

**Mondays
3.20-4.20pm**

Award winning theatre company
RABBLE Theatre are offering group
acting LAMDA classes at Chiltern Edge
£11.50/class
(Assisted places can be offered through the
RABBLE Access Fund, contact us for details)
LAMDA stands for the London Academy of
Music and Dramatic Art and it is one of the
biggest arts examining bodies in the country.
For more information e-mail:
admin@rabblelamda.com



NOTICE board

Christmas Competitions!



Congratulations to Amber W, who won the ticket design competition for this years show, A Christmas Carol!

Inter House Football

During the last week of half term in one of your PE lessons you will be taking part in the inter-house football competition for this you will need outdoor PE kit for the lesson. Please check when your interhouse competition will be and ensure you have the correct kit. The PE department are looking forward to seeing some competitive football matches and friendly inter-house competition.

Monday 12, December	Period 2 Year 8	Period 5 Year 7
Tuesday 13, December	Period 4 Year 10	Period 5 Year 11
Thursday, 15 December	Period 3 Year 9	





NOTICE board



What's On?



Year 11 Prom Fundraising



11A are fundraising for the Prom by selling and delivering Christmas cards!

Cards are 50p each and you get it personally delivered with a candy cane to your friends by our very own MECE Christmas Elves and Santa.

Cash only. 50p per card

Buy, sign and post your Christmas cards in the Quad at breaktime from 1st December until 9th December

Spread the joy and support Prom

Science

STEM Project – Year 9

Students involved:

Daisy M

Immy H

Dariia P

Georgina I

Isla R

Will K

1st Meeting – Tuesday
Lunchtime – in S3



08th December 2022 – 15.30 – delivered virtually

19th January 2022 – 15.30 – delivered virtually

02nd March 2022 – 15.30 – delivered virtually

16th March 2022 – whole school day event at Worton Park and Witney Site Tour

Well done to this team who have been selected to represent the school. The team of students will be provided with a mentor from Siemens Healthineers who will provide virtual support and guidance for the whole programme.



NOTICEboard



MECE Sports News!

Year 8 and 9 Girls Football

The Year 8/9 (plus a few year 7s) girl's football team had their first fixture of the season away at Langtree, against Cranford House. The team started strong, taking a 2-0 lead early in the game. At the final whistle the team secured a 3-2 win. The whole team played incredibly well and it's great to see how each individual has progressed over the past year. Special mention to team captain Honey, who had a fantastic game and will no doubt lead the team to more victories this season!



Year 10 and 11 Girls football

The girls played against a strong Langtree team first up and held their own for the first 10 minutes of the game with some strong defending from Gemma, Carys and Kerise and some good saves by stand-in goalkeeper, Amelia. Langtree opened the scoring with a very good long range effort and then scored 3 quick goals in the last 5 minutes of the game to run out 4-0 winners. In great credit to our girls they re-grouped quickly and went straight back out to play Icknield School and took the game to them straight from kick off. We took a quick 2-0 lead with good build up play by Emily, Hettie and Bella with the goals finished off well from Emily and Carys. An injury to Hettie forced her off the pitch and this seemed to effect the team as we conceded two sloppy goals allowing Icknield back into the game at 2-2. The girls stayed positive and again good attacking play from Bella led to a chance for Kerise who finished superbly to get the win for MECE!



Year 7 Girls Football

Year 7 Girls football team travelled to Langtree on Thursday evening for their first football fixtures of the season. The girls lost their first game at against a strong Langtree side 3-0 but regrouped to go on and win 1-0 against Icknield School. Well done to all involved and congratulations to Poppy for scoring the winning goal. We look forward to next weeks fixture away at Wallingford School and then the following fixtures after the Christmas break to see how you progress and develop in the league!

A big **Thank You** to Mr. Baker for taking the girls to the fixture to ensure it still went ahead. Well done girls! I look forward to next week's fixture away at Wallingford School and how we can do across the rest of the football season!



NOTICE Board



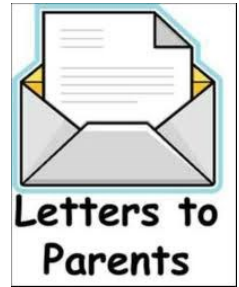
Letters Home This Week

Please Click [HERE](#) to Find Whole School Letters on our website.

Please Click [HERE](#) For Year 7 Letters on Our Website.

Please Click [HERE](#) for Year 9 Letters on Our Website

Please Click [HERE](#) For Year 10 Letters on Our Website



Please be aware that the later school bus which departs from outside the school at 16:22 now runs on Tuesdays, Wednesdays and Thursdays only.

On Mondays and Fridays students can walk down Reades Lane towards Sonning Common and catch the 25 bus which departs at 16:25. The bus stop is located on Wood Lane opposite the junction with Reades Lane.

