



Monday 08 January	First Day of Term
8:40am	Start of Day for all Years
9:10am	Year 11 Headteacher Assembly
9:40am	Year 9 & 10 Headteacher Assembly
10:10am	Year 7 & 8 Headteacher's Assembly
Tuesday 09 January	Year 8 Head of Year Assembly
Wednesday 10 January	Year 7 Head of Year Assembly
Thursday 11 January	Year 9 Head of Year Assembly
Friday 12 January	Year 10 & 11 Head of Year Assembly

Clubs will recommence week commencing 15 January

08 January	First Day of Term—08:40 start
w/c 08 Jan	House Sudoku
16 Jan	UNLOC—Year 11
22 Jan	Year 9 — Getting Ready for Options Workshop
26 Jan	Year 9 Options Launch
26 Jan	Year 9 Options Launch for Parents
31 Jan	Bletchley Park Trip

Canteen

<div> <div>MENU</div> <div>Week Two:</div> </div>				
MONDAY	TUESDAY	WEDNESDAY	THURSDAY	FRIDAY
Sweet Chilli Chicken Stir Fry Noodles	Spaghetti Bolognaise With Garlic Bread	Southern Coated Chicken Burger with Wedges & Salad	Grilled Sausages with Mashed Potatoes & Gravy	Fish & Chip Friday
Carrots	Roasted Vegetables	Sweetcorn	Broccoli	Peas/Mushy Peas
5 Bean Chili & Rice	Quorn Bolognaise With Garlic Bread	Spicy Bean Burger with Wedges & Salad	Grilled Vegi Sausages With Mashed Potatoes & Gravy	Vegan Sausage Roll Served with Peas & Fries
Pasta Bar with a Choice of Freshly Made Sauces	Pasta Bar with a Choice of Freshly Made Sauces	Pasta Bar with a Choice of Freshly Made Sauces	Pasta Bar with a Choice of Freshly Made Sauces	Pasta Bar with a Choice of Freshly Made Sauces
Jacket Potatoes with Assorted Toppings	Jacket Potatoes with Assorted Toppings	Jacket Potatoes with Assorted Toppings	Jacket Potatoes with Assorted Toppings	Jacket Potatoes with Assorted Toppings
Sticky Toffee Pudding served with Custard	Forest Fruit Crumble served with Custard	Jam & Coconut Sponge served with Custard	Apple & Cherry Pie served with Custard	Cake Selection
Sandwiches An Assortment of Filled Sandwiches Available Daily	Daily Options A Selection of Salad Bowls to order & Plain Bread will be available Daily.		Cold Desserts Fruit Pots, Whole Fruit, Yoghurts & Jelly available daily.	

You can find all the canteen menus on the school website

[HERE](#)

MAIDEN ERLEGH
CHILTERN EDGE

NUTS AND TRACES OF NUTS CAN BE FOUND IN MANY ITEMS INCLUDING:

WE ARE A NUT FREE SCHOOL

CHOCOLATE/ SANDWICH SPREAD, SATAY CHICKEN, CHOCOLATE BARS/BOXES, AND BISCUITS.

Breakfast Available From 8:15am

Danish Pastries	£1.30
Bacon Rolls	£1.50
Cereal	£1.30
Fresh Fruit Box	£1.30
Yogurt	£0.80
Toast	£0.50

A Reminder:

Please send your child to school with a refillable water bottle!

No energy, sugary or fizzy drinks in school.

House Stars of the Week

Peppard



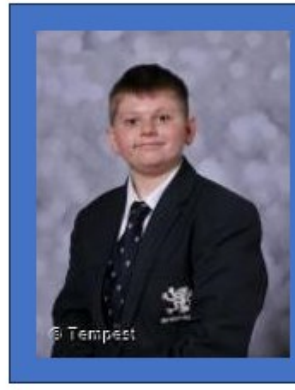
David B 7B
33 Points

Abbey



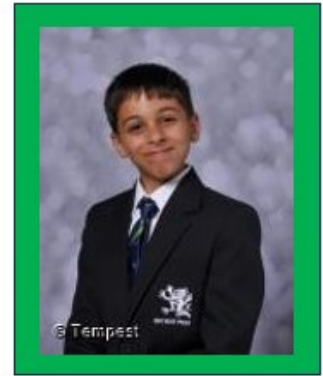
Issac J 7C
35 Points

Thames



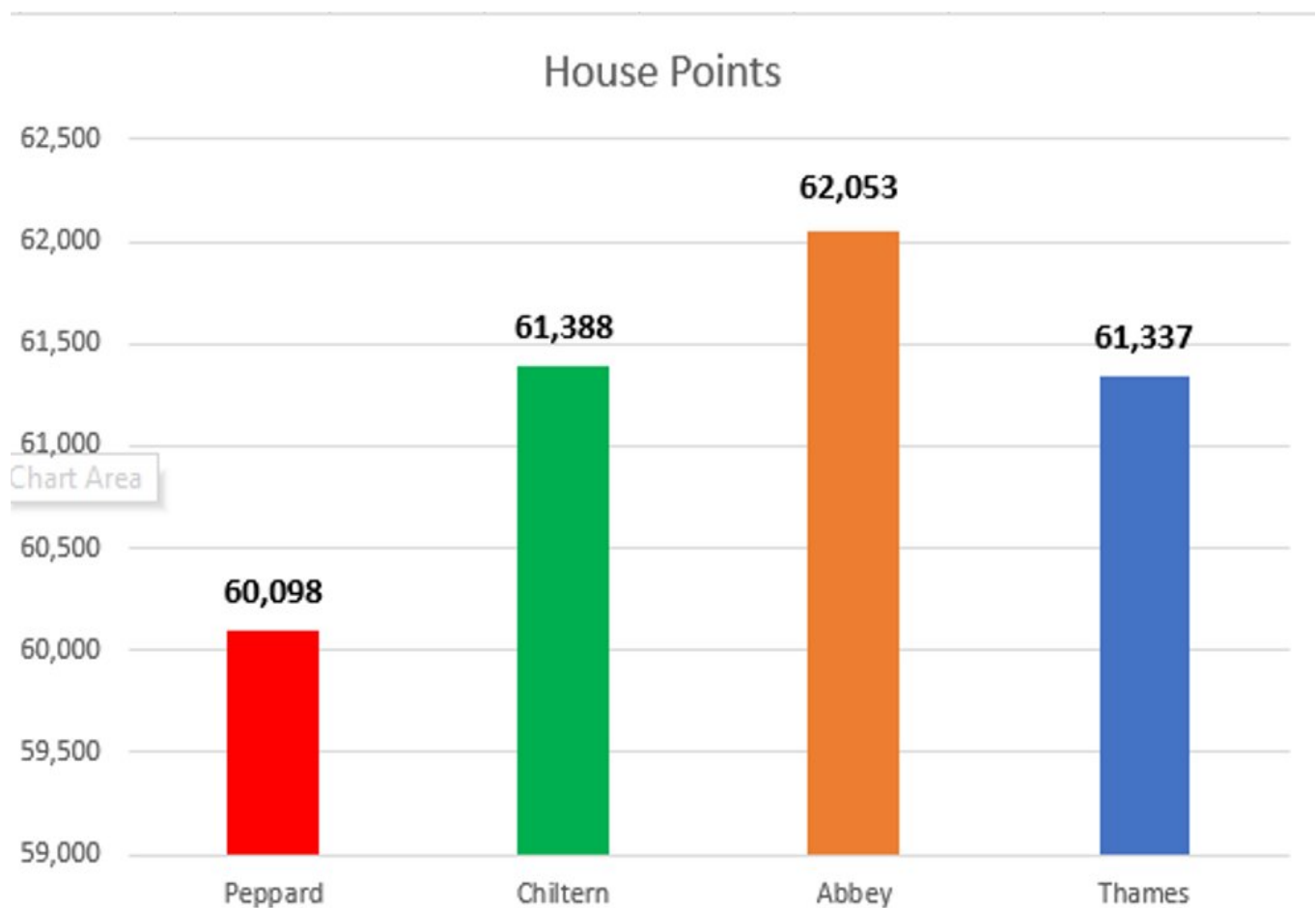
Liam S 7B
34 Points

Chiltern



James H 7B
39 Points

Overall House Standings!!!



Maiden Erlegh Chiltern Edge



We want your empty plastic bottles

- ECO club are building a bench made from recycled drinks bottles.

- Collect your empty bottles (rinsed if possible) and place into the red bin in the canteen.



Did you know you can hire school spaces?

We have a variety of spaces available to hire around the school which are used by local groups including a choir, football clubs, badminton clubs, a dance school and basketball club. Please get in touch on meceoffice@maidenerleghtrust.org if you are interested in hiring any of the spaces below:

Sports Hall

Main Hall with stage

AV Theatre

Classrooms

Design Technology Room

Computer Rooms

Football/Rugby Pitch

Drama Studio

Dance Studio

Facilities hire charges can be found on the website [HERE](#)

Assemblies This Week

Headteacher Assembly with Mrs Bowers & Head of Year Welcome

Lost Property

We have numerous items of lost property in student services.

Any named items will be in student services, ready for collection. However, any unnamed items will be bagged up and sent to charity on the 26 January 2024.

Buses After School

Please be aware that the later school bus which departs from outside the school at 16:22 now runs on Tuesdays, Wednesdays and Thursdays only.

On Mondays and Fridays students can walk down Reades Lane towards Sonning Common and catch the 25 bus which departs at 16:25. The bus stop is located on Wood Lane opposite the junction with Reades Lane.

Letters Home This Week

Please Click [HERE](#) for Whole School & Year Group Letters on our website.

