

STUDENT bulletin

22 January 2024 – Week 2

Monday 22 January	
Period 1	Year 9 Workshop—”Getting ready for options in AV theatre
Lunchtime	School Nurse Drop in (All Years) Nurses Office—moved from Tuesday for this week only
Lunchtime	Gym—open to all
Lunchtime	All years—Dance Club with Miss Cheeseman, Dance Studio
Lunchtime	Year 8 Boys Indoor Football—Sports Hall (week 2 only)
Lunchtime	Music Club with Mrs Brown in the Music Room
Lunchtime	Puzzle Pirates with Mrs Priest in M2
Lunchtime	STEM Club with Mrs Sarpong in S3—all years
FIXTURE Afterschool	U14 girls football—HOME
Tuesday 23 January	
	7A on litter duty
Lunchtime	Gym—open to all
Lunchtime	Chess Club with Mr Cuthbert in the library—all years
Lunchtime	Tuesday Maths Lunchtime Drop in M1/BITS—Mrs Chopra
Lunchtime	A Level Math Club for KS4 Higher Maths Students, Mrs Gopal, M3
Afterschool—4.15pm	Maths Drop in, Miss Chopra, M1 (All Years)
Afterschool—4.10pm	Homework Club in the Library
Afterschool—4.10pm	Year 7/8 Football – boys
FIXTURE Afterschool	Year 9 boys football—AWAY
Wednesday 24 January	Year 7 & 8 Holocaust Memorial Assembly in Main Hall
	7B on litter duty
Lunchtime	Garden/Eco Club, Miss Kirby, S1
Lunchtime	Gym—open to all
Lunchtime	Basketball for All—Sports Hall
Lunchtime	KS3 Literary Film Club with Mr Groves in EN1
Lunchtime	Year 9 & 10—Maiden Erlegh Independent Project in BTEC
Afterschool-4:15pm	Year 11 Study Session by invitation only with Mr Groves EN1
Afterschool—4:10pm	Basketball Club
Afterschool – 4:10pm	Year 9-11 football – boys
Afterschool—4:10pm	Homework Club in the Library
Afterschool	Year 9 girls coaching leadership group
FIXTURE—Afterschool	Year 7 girls football—HOME

Continued...

Thursday 25 January	Year 9, 10 & 11 Holocaust Memorial Assembly in Main Hall
Lunchtime	Gym—open to all
Lunchtime	Year 10 & 11 Boys indoor football in Sports Hall (Week 1 only)
Lunchtime	Geography Club with Mr Sheridan in Hum4
Period 5	Year 9 Options Launch
Afterschool—4:10pm	Homework Club in the Library
Afterschool—4:10pm	The Debate Society for KS3 with Mr Groves in EN1
Afterschool - 4:15pm	Latin Club
6pm	Options Launch for Parents
FIXTURE afterschool	Year 9 boys football—AWAY
Friday 26 January	
Lunchtime	Gym—open to all
Lunchtime	Science Drop In with Miss Swayne in S3—all years
Lunchtime	Girls Indoor Football—all years—Sports Hall
Lunchtime	History Club with Mrs Smith in HUMS1—now every week
Lunchtime	All years—Table Tennis Club – Main Hall with Mr Caldwell
Afterschool—4:15pm	Ski Fit in Sports Hall—compulsory for students going on MET Ski Trip

Advance Notice

29 January	Intermediate maths challenge for Year 9 and 10
30 January	Intermediate maths challenge for Year 9 and 10
30 January	Year 11 Progress Booster Exam
31 January	Bletchley Park trip Y9
02 February	Year 8 HPV Immunisations
05-09 February	National Apprenticeship Week
06 February	Space Workshop Separate Scientists
06 February	Y9 Parents' Evening
13 March	Rags2Riches Collection Day

Canteen

MENU <small>Week One:</small>				
MONDAY	TUESDAY	WEDNESDAY	THURSDAY	FRIDAY
Chicken Tikka Masala with Pilau Rice & Mango Chutney	Beef Chilli with Rice & Sour Cream	Roast Chicken Thigh with Roast Potatoes & Gravy	Chicken Fajita Wrap	Fish & Chip Friday
Roasted Cauliflower	Peas & Sweetcorn	Broccoli	Carrots	Peas/Mushy Peas
Spinach & Chickpea Rogan Josh served with Rice & Mango Chutney	Vegetable Chilli Taco	Vegetable & Mozzarella Wrap	Macaroni Cheese with Garlic Bread & Salad	Vegetable Nuggets served with Peas & Fries
Pasta Bar with a Choice of Freshly Made Sauces	Pasta Bar with a Choice of Freshly Made Sauces	Pasta Bar with a Choice of Freshly Made Sauces	Pasta Bar with a Choice of Freshly Made Sauces	Pasta Bar with a Choice of Freshly Made Sauces
Jacket Potatoes with Assorted Toppings	Jacket Potatoes with Assorted Toppings	Jacket Potatoes with Assorted Toppings	Jacket Potatoes with Assorted Toppings	Jacket Potatoes with Assorted Toppings
Apple & Berry Oat Crumble served with Custard	Syrup Sponge served with Custard	Chocolate Sponge served with Chocolate Sauce	Mixed Fruit Sponge served with Custard	Cake Selection
Sandwiches An Assortment of Filled Sandwiches Available Daily		Daily Options A Selection of Salad Bowls to order & Plain Bread will be available Daily.		Cold Desserts Fruit Pots, Whole Fruit, Yoghurts & Jelly available daily.

You can find all the canteen menus on the school website

[HERE](#)




MAIDEN ERLEGH
CHILTERN EDGE

NUTS AND TRACES OF NUTS CAN BE FOUND IN MANY ITEMS INCLUDING:

WE ARE A NUT FREE SCHOOL

CHOCOLATE/ SANDWICH SPREAD, SATAY CHICKEN, CHOCOLATE BARS/BOXES, AND BISCUITS.





Breakfast Available From 8:15am

Danish Pastries	£1.30
Bacon Rolls	£1.50
Cereal	£1.30
Fresh Fruit Box	£1.30
Yogurt	£0.80
Toast	£0.50

A Reminder:

Please send your child to school with a refillable water bottle!

No energy, sugary or fizzy drinks in school.

House Points!!!

House Stars of the Week



MAIDEN ERLEGH
CHILTERN EDGE

Peppard



David B 7B
25 Points

Peppard



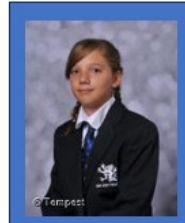
Lexi C 7A
25 Points

Abbey



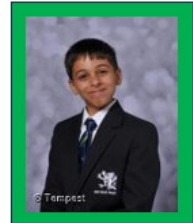
Efe B-U 8C
21 Points

Thames



Emily H 7B
20 Points

Chiltern



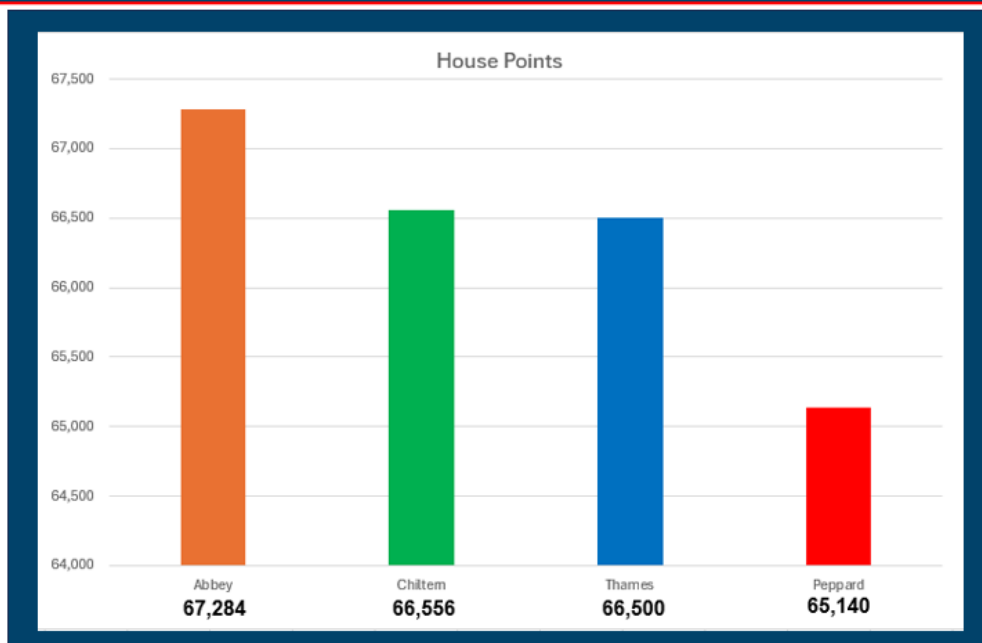
James H 7B
25 Points



Overall House Standings!!!



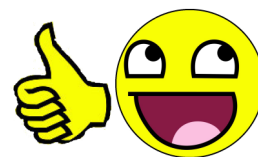
MAIDEN ERLEGH
CHILTERN EDGE



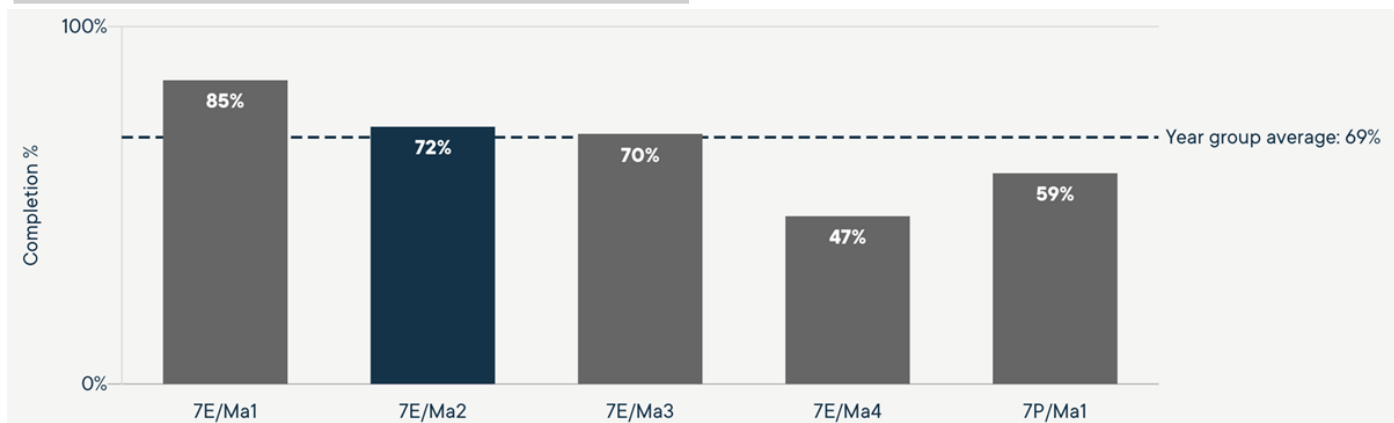
TERM 1



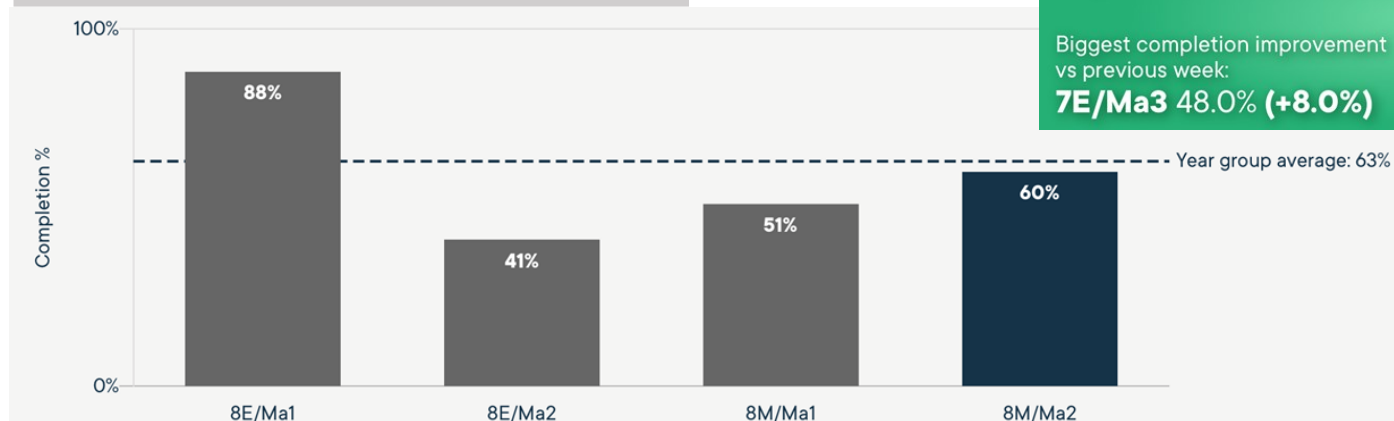
LEADERBOARD



Homework competition Year 7



Homework competition Year 8



Highest completion:
8E/Ma1 (68.8%)

Biggest completion improvement
vs previous week:
7E/Ma3 48.0% (+8.0%)

These students have not only completed their homework on time and handed it in but also obtained top marks in their homework in comparison to their peers. Well done !

Y7- Sparx Shout Outs

Shree V
Holly G
Gracie P
Peter C
Josh W
Luke M
Beau G
Amelia B
David B



Y8- Sparx Shout Outs

Libby S
Finn P
Archie T
Daniel C
Eleanor L
Callum L
Suzzana S
Connor H

Sparx Wizards

Edith C(Y7)
Hollie M(Y7)
Annabelle O(Y7)
Darcy G(Y7)
Isaac J
Lila Grace C (Y7)
Grace C(Y8)
Harriet J(Y8)
Olivia I(Y8)
Dylan C(Y8)
Aistis B(Y8)

Support the School Lottery
By clicking **HERE**

SUPPORT OUR SCHOOL PLAY OUR LOTTERY



- Tickets cost just £1 a week
- The easy way to help us raise funds
- Local cash prizes every week



BUY TICKETS:

Go to: www.yourschoollottery.co.uk

And search for: Maiden Erlegh



Maiden Erlegh Chiltern Edge



We want your empty plastic bottles

- ECO club are building a bench made from recycled drinks bottles.
- Collect your empty bottles (rinsed if possible) and place into the red bin in the canteen.



Did you know you can hire school spaces?

We have a variety of spaces available to hire around the school which are used by local groups including a choir, football clubs, badminton clubs, a dance school and basketball club. Please get in touch on meceoffice@maidenerleghtrust.org if you are interested in hiring any of the spaces below:

Sports Hall
Main Hall with stage
AV Theatre
Classrooms
Design Technology Room
Computer Rooms
Football/Rugby Pitch
Drama Studio
Dance Studio

Facilities hire charges can be found on the website [HERE](#)

National Apprenticeship Week



Don't forget!!

National Apprenticeship Week 24 #NAW24 - is coming soon! (5-11 February 2024).

Join UNIFROGS virtual fair to learn all about the world of apprenticeships. Explore the latest apprenticeship opportunities, attend live sessions with top employers including BBC, British Army, KPMG, Lloyds Banking Group and Unilever, and network one-on-one to get top tips on how to find and apply for your dream apprenticeship.

Wednesday 7 February @ 16:30 UK time - 2hrs 30 mins

Lost Property



A number of unnamed items have found their way to lost property since the start of term, if you have lost something since the Christmas break please come to student services.

Thank you



Oxford Health
NHS Foundation Trust

PARENT WEBINAR

Parents are the most important part of young people's lives and hold the key to helping them. Let us help you, to help them.

CAMHS

Child and Adolescent
Mental Health Service

MENTAL HEALTH AWARENESS SESSIONS FOR
PARENTS AND CARERS



SUBJECTS INCLUDE

- TEEN ANXIETY
- SELF HARM
- LOW MOOD
- HOW TO TALK TO YOUR DISTRESSED CHILD

WWW.OXFORDHEALTH.NHS.UK/CAMHS/OXON/SIR/WEBINARS

HOLOCAUST MEMORIAL DAY

Buses After School

Please be aware that the later school bus which departs from outside the school at 16:22 now runs on Tuesdays, Wednesdays and Thursdays only.

On Mondays and Fridays students can walk down Reades Lane towards Sonning Common and catch the 25 bus which departs at 16:25. The bus stop is located on Wood Lane opposite the junction with Reades Lane.

Letters Home This Week

Please Click [HERE](#) for Whole School & Year Group Letters on our website.

