

# What's on this Week?

Monday 11 March	British Science Week
Lunchtime - Science Week	Make a Rollercoaster Go Faster—S1—All years
Lunchtime	Gym—by invitation
Lunchtime	Dance Club
Lunchtime	Music Club with Mrs Brown in the Music Room
Lunchtime	STEM Club with Mrs Sarpong in S3—all years
Tuesday 12 March	
	7B on litter duty
	LAST Day for Donating Clothing to Rag2Riches4Schools
Lunchtime - Science Week	Biomagnification in Food Chains —S1—Year 7
Lunchtime	NEW—Geography Club with Mr Sheridan HUM4
Lunchtime	NEW—Badminton in Sports Hall
Lunchtime	Chess Club with Mr Cuthbert in the library—all years
Lunchtime	Tuesday Maths Lunchtime Drop in M1/BITS—Mrs Chopra
Lunchtime	A Level Math Club for KS4 Higher Maths Students, Mrs Gopal, M3
Lunchtime	NEW—Rowing in Main Hall with Henley Rowing Club
Period 5	Paul Hannaford Assembly - Y 9 & 10
Afterschool—4.15pm	Maths Drop in, Miss Chopra, M1 (All Years)
Afterschool—4.10pm	Homework Club in the Library
Afterschool –6pm	Year 8 Netball Fixture—AWAY
Wednesday 13 March	Year 7 & 8 Assembly in Main Hall with Mrs Smith
	7C on litter duty
Lunchtime - Science Week	How to Accurately Measure Time —S1—All years
Lunchtime	Change of Day—School Nurse Drop in (All Years) Nurses Office
Lunchtime	Garden/Eco Club, Miss Kirby, S1
Lunchtime	Gym— by invitation
Lunchtime	NEW—KS3 Netball
Lunchtime	Year 9 & 10—Maiden Erlegh Independent Project in BTEC
Afterschool—4:10pm	Homework Club in the Library

## Continued...

Thursday 14 March	Year 9, 10 & 11 Assembly in Main Hall with Mrs Smith
Lunchtime	NEW—Rowing in Main Hall with Henley Rowing Club
Lunchtime—Science Week	Measuring Rates of Reactions—Years 9-11
Lunchtime	Puzzle Pirates with Mrs Priest in M2
Afterschool—5pm	Duke of Edinburgh—First Aid Part 1 & 2—Training Suite—All to Attend
Afterschool—4:10pm	Homework Club in the Library
Afterschool - 4:15pm	Latin Club
Afterschool - 4:15pm	NEW—Psychology Club Year 7 & 8 with Mrs Constantinescu in EN1
Afterschool	Year 8/9 Netball at Wallingford
Friday 15 March	Year 9, 10 & 11 Assembly in the Main Hall
Lunchtime—Science Week	Crazy Scientist—all years
Lunchtime	Science Drop In with Miss Swayne in S3—all years
Lunchtime	NEW Table Tennis in Main Hall
Lunchtime	History Club with Mrs Smith in HUMS1—now every week

## Advance Notice

<b>16 March</b>	<b>Secondhand Uniform Sale, 10am-1pm</b>
<b>20 March P2/3</b>	<b>Year 11 Geography fieldwork to Sonning Common (Mr Sheridan's class)</b>
<b>20 March</b>	<b>Year 10 Careers Event at Kassam Stadium (8:40-12:30)</b>
<b>21 March</b>	<b>Early close (1:30pm) for Year 7 - 10</b>
<b>22 March</b>	<b>Year 11 Geography fieldwork to Sonning Common (Mrs Hills class)</b>
<b>28 March</b>	<b>Last Day of Term—3:15pm finish</b>

## Borrowing PE Kit

**All spare PE kit has been moved from student services to the PE department - if you need to borrow PE kit please see you PE teacher before your lesson.**

# Canteen


<div>  <div>MAIDEN ERLEGH CHILTERN EDGE</div> <div>NEW FUSION TASTY DELICIOUS</div> <div>FRESH CRUNCHY</div> </div>					
Week 1	Monday	Tuesday	Wednesday	Thursday	Friday
Meat Main	Cheeseburger with Jacket Wedges & Sweetcorn	Peri Peri Chicken Wrap	Chicken Katsu Curry with Basmati Rice & Mixed Vegetables	Beef Lasagne with Garlic Bread & Broccoli Side Salad	Chip Shop Friday
Vegetarian Main	Vegi Burger with Jacket Wedges & Sweetcorn	Spicy Mexican Bean Wrap	Vegetable Korma with Basmati Rice & Mixed Vegetables	Roasted Vegetable & Feta Lasagne with Garlic Bread & Broccoli Side Salad	Cheese & Onion Pasty
Dessert of the Day	Apple & Berry Crumble Custard Yogurt, Fresh Cut Fruit, Fruit Pot, Jelly	Syrup Sponge Custard Yogurt, Fresh Cut Fruit, Fruit Pot, Jelly	Chocolate Sponge Chocolate Sauce Yogurt, Fresh Cut Fruit, Fruit Pot, Jelly	Rice Pudding with Jam Yogurt, Fresh Cut Fruit, Fruit Pot, Jelly	Cake Selection Yogurt, Fresh Cut Fruit, Fruit Pot, Jelly
Pasta & Jackets	Pasta Bar with Sauces Jacket Potatoes Available daily	Pasta Bar with Sauces Jacket Potatoes Available daily	Pasta Bar with Sauces Jacket Potatoes Available daily	Pasta Bar with Sauces Jacket Potatoes Available daily	Pasta Bar with Sauces Jacket Potatoes Available daily
Grab 'n' Go	Assorted Grab & Go Items Available Daily	Assorted Grab & Go Items Available Daily	Assorted Grab & Go Items Available Daily	Assorted Grab & Go Items Available Daily	Assorted Grab & Go Items Available Daily

Please ask for more information if you have allergies.

You can find all the canteen menus on the school website

[HERE](#)






MAIDEN ERLEGH  
CHILTERN EDGE

**NUTS AND TRACES OF NUTS CAN BE FOUND IN MANY ITEMS INCLUDING:**

**WE ARE A NUT FREE SCHOOL**

**CHOCOLATE/ SANDWICH SPREAD, SATAY CHICKEN, CHOCOLATE BARS/BOXES, AND BISCUITS.**



**Breakfast Available  
From 8:15am**

Danish Pastries	£1.30
Bacon Rolls	£1.50
Cereal	£1.30
Fresh Fruit Box	£1.30
Yogurt	£0.80
Toast	£0.50

**A Reminder:**

**Please send your child to school with a refillable water bottle!**

**No energy, sugary or fizzy drinks in school.**

# House Points!!!

## House Stars of the Week



MAIDEN ERLEGH  
CHILTERN EDGE

### Peppard



Stephanie C 8C  
23 Points

### Abbey



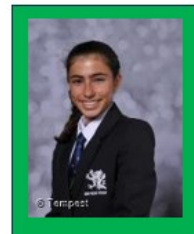
Murray C 8B  
25 Points

### Thames



Elliot M 8A  
30 Points

### Chiltern



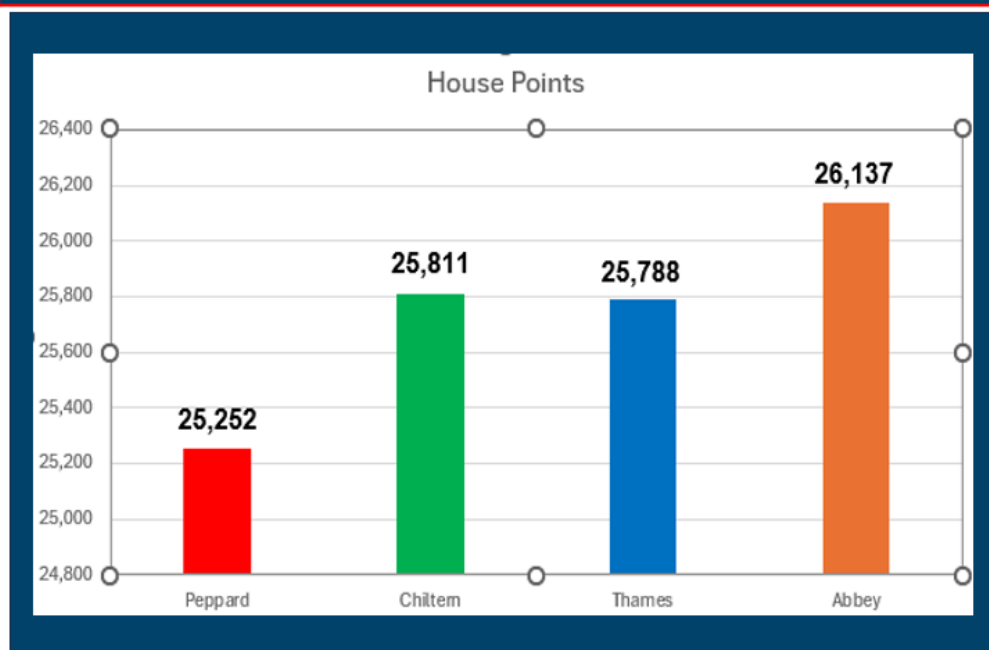
Ines L 8B  
27 Points



## Overall House Standings!!!



MAIDEN ERLEGH  
CHILTERN EDGE



Well Done  
Abbey



## Sparx Maths

**353,169**

questions answered correctly in Sparx Maths so far this year

Students in your school have completed

**3,247 hours**

of personalised learning on Sparx Maths this year!

Highest completion:

**7E/Ma2 (74.2%)**

Reached a new XP Level:

**8 students**

[view](#)

Biggest completion improvement vs previous week:

**7E/Ma2 74.2% (+38.7%)**

Highest average XP per student:

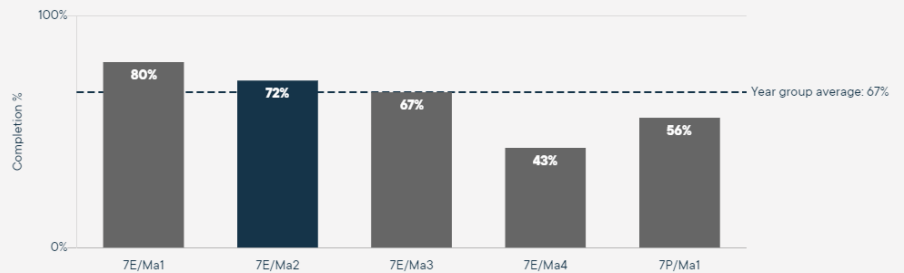
**11x/Ma1 (1000 XP)**

**180 students**

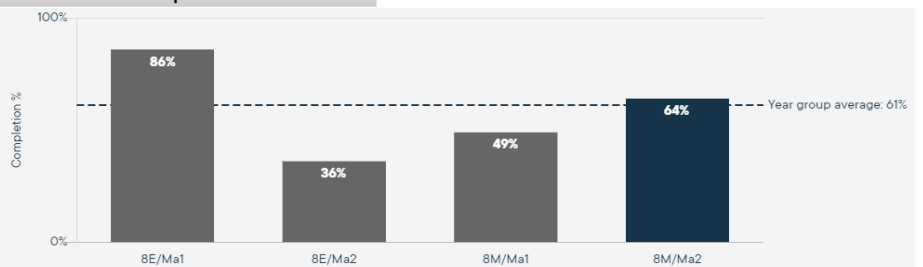
have already improved at their times tables this year. Great job!

### LEADERBOARD

#### Homework competition Year 7



#### Homework competition Year 8



## Sparx Maths

### LEADERBOARD

Top Performers

Reached a new XP Level:  
**8 students**

These students completed their Compulsory Homework earliest this week

#### Sparx Wizards

Shree V(Y7)  
Olivia N(Y7)  
Zainab S(Y7)  
Amelia B(Y7)  
Mamathe S(Y7)

#### Sparx Wizards

Daniel C(Y8)  
Aistis B (Y8)  
Areta P(Y8)  
Dylan C(Y8)

#### Sparx Maths Superstars (Y7 & Y8)

Jayden L	Harriet J
Leon C	Riley F
Henry W	Ellie N
Annabelle O	Konstantinos G



These students have not only completed their homework on time and handed it in but also obtained top marks in their homework in comparison to their peers. Well done !

#### Y7- Sparx Shout Outs

Edith C  
Leon C  
Aron M  
Henry W  
Ina A-M  
Ruby W  
Isaac J  
Lila G-C

#### Y8- Sparx Shout Outs

Aiden W  
Archie T  
Ines L  
Niamh K  
Deanna G  
Suzzana E  
Ruby P  
Libby S



MAIDEN ERLEGH  
CHILTERN EDGE



# House Competition



## Science Week House Poster Competition

Produce a poster on A4 or A3 paper, with the theme time. Think about the following for inspiration: What you do with your time? What does time mean to you? How do you measure time? What about time in space? Time travel?

### Previous winners



### What your entry will be judged on...

- **Creativity in approach** – Innovative angle on the content or creative interpretation of the theme – don't be afraid to think outside the box
- **Content** – Clear, accurate and informative about a STEM topic
- **Effective communication** – presented and communicated in an engaging way

2HP for every entry. Golden ticket to 4 winners who will have their work sent into the British science association. For more details visit [Poster competition - British Science Week](#). Submit your posters to Mrs Kirby by 22<sup>nd</sup> March, with full name and house name.

# School Health Nurse

If your child is unwell, please refer to the NHS choices Live well site which can be found on the following link

<https://www.nhs.uk/live-well/is-my-child-too-ill-for-school/>

This will help you to decide if your child is too ill for school.

## SCHOOL HEALTH NURSE *Lunchtime Drop-in*

*Wednesday Lunchtime this week*



or to prebook an appointment, email  
**[Jody.Coleman@oxfordhealth.nhs.uk](mailto:Jody.Coleman@oxfordhealth.nhs.uk)**,  
speak to Miss Hibberd or ask at  
**Student Services**



Term 4 Secondary School Health Nurse Team Newsletter  
2024

Term 4 March 2024

[Go to this Sway](#)



# Clothing Collection

MAIDEN ERLEGH CHILTERN EDGE

# Raise funds by collecting reusable clothes



**WE ACCEPT CLEAN,  
GOOD QUALITY, DRY,  
REUSABLE CLOTHING**

- |   |   |
|---|---|
| <input checked="" type="checkbox"/> Adults, Childrens & Babies Clothing | <input checked="" type="checkbox"/> Jewellery and Accessories |
| <input checked="" type="checkbox"/> Paired Shoes and Footwear           | <input checked="" type="checkbox"/> Belts and Handbags        |

A full list of reusable items is listed on our website  
[www.rags2riches4schools.co.uk](http://www.rags2riches4schools.co.uk)

**WE DO NOT ACCEPT**

**POOR QUALITY ITEMS SUCH AS  
DIRTY, WET, RIPPED OR SOILED  
CLOTHES.**

**PILLOWS, DUVETS, CURTAINS,  
BOOKS CDs OR ANY UNIFORM**

If you are unsure what to put in the bags

**STOP AND THINK  
WOULD YOU WEAR IT?**

Please use the clothing bag provided.  
You can also use any additional bag if required.

**Donations to school on or by Tuesday 12 March**





# Duke of Edinburgh Award Scheme Dates

Date	Content	Timing	Location
14/03/24 <b>All to attend</b>	First Aid – Part 1 / 2	3:15pm – 5:00pm	Training Suite
27/03/24 Parents and students online to attend	DofE parent online meeting <b>(the practice expedition)</b>	7:00pm – 8:00pm	Google Meets: DofE Parent Meeting 4 - Practice Expedition Information  Wednesday, 27 March · 7:00 – 8:00pm  Time zone: Europe/London  Google Meet joining info  Video call link: <a href="https://meet.google.com/uag-tksy-kxm">https://meet.google.com/uag-tksy-kxm</a>
28/03/24 <b>All to attend</b>	Planning your meal	3:15pm – 4:15pm	Training suite
25/04/24 <b>All must attend</b>	Pitching your tents	3:15pm – 5:00pm	Training suite
10/05/24 <b>All must attend</b>	Reading a map using a compass and planning your route	3:15pm – 5:15pm	Training suite
<b>15/05/24 or 16/05/24</b>	Health and safety briefing	3:15pm : 4:15pm	BITS

## Did you know you can hire school spaces?

We have a variety of spaces available to hire around the school which are used by local groups including a choir, football clubs, badminton clubs, a dance school and basketball club. Please get in touch on [meceoffice@maidenerleghtrust.org](mailto:meceoffice@maidenerleghtrust.org) if you are interested in hiring any of the spaces below:

Sports Hall

Main Hall with stage

AV Theatre

Classrooms

Design Technology Room

Computer Rooms

Football/Rugby Pitch

Drama Studio

Dance Studio

Facilities hire charges can be found on the website [HERE](#)

# Sonning Common Youth Club

**WHAT'S ON FEB-MARCH**

**21ST AND 22ND FEB**  
FINGER KNITTING  
FOOTBALL  
MULTI SPORTS  
CRAFTS

**28TH AND 29TH FEB**  
MALTEASER TRAYBAKE  
FOOTBALL  
MULTI SPORTS

**6th and 7th March**  
make your own  
pizza night, football  
and  
multi sports

**13th and 14th March**  
Mother's Day cards and crafts,  
football, and  
multi sports.

**20th and 21st March**  
Rice crispy cakes  
and Easter cards

**27th and 28th March**  
Easter Hunt,  
football  
and  
multi sports.

**SONNING  
YOUTH  
COMMON CLUB**

## Easter Event April 2024

### Schedule

**2nd April** Easter event  
Come along and join in with some outdoor activities like football, multi sports and making snacks  
1.30pm - 3.30pm

**10th April** Youth club with A twist  
We will be using the memorial field to play football and multi sports and going to the local chip shop.  
5pm - 7pm

**11th April** Baking session  
Come along and bake some marvellous bakes. There will be a prize for the best bake.  
1.30pm - 3.30pm

All the above events are totally free  
Anyone aged from 10 years old to 16 years old are welcome.

For more info email:  
youthleader@sonningcommonparishcouncil.gov.uk

**COMMUNITY FUND**

**SONNING  
YOUTH  
COMMON CLUB**

# Easter Workshop



Stagecoach  
Reading Caversham

**Easter Workshop - Show in a Week**

Put on the show in just 5 days! Everything from casting to costume and performance in an exciting production week ending with the show.

**8-12 APRIL 2024**

**Age:** 6 - 18 year-olds  
**Time:** 10.00am - 4.00pm  
**Performance:** 4.00pm on the last day  
**Cost:** £145 (£125 siblings)  
**Venue:** Highdown School, Berkshire, RG4 8LR

stagecoach.co.uk/readingcaversham 07894 951990

**TRAFALGAR INTERNATIONAL**

**STAGE COACH**  
Creative Courage For Life®

**CHILDCARE VOUCHERS ACCEPTED**

**BOOK NOW**

## Assembly this Week



Support the School Lottery  
By clicking [HERE](#)



## Buses After School

Please be aware that the later school bus which departs from outside the school at 16:22 now runs on Tuesdays, Wednesdays and Thursdays only.

On Mondays and Fridays students can walk down Reades Lane towards Sonning Common and catch the 25 bus which departs at 16:25. The bus stop is located on Wood Lane opposite the junction with Reades Lane.

## Letters Home This Week

Please Click [HERE](#) for Whole School & Year Group Letters on our website.

