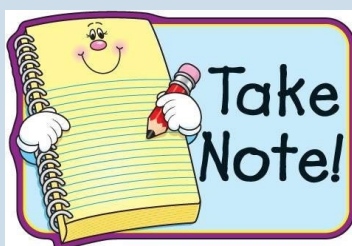


What's on this Week?

Monday 18 March	Year 11 Assembly with Miss Bliss—AV Theatre—Exams Briefing
Lunchtime	Gym—by invitation
Lunchtime	Dance Club
Lunchtime	Music Club with Mrs Brown in the Music Room
Lunchtime	STEM Club with Mrs Sarpong in S3—all years
Tuesday 19 March	Year 9 Assembly with Miss Bliss—AV Theatre—Options Update
	7D on litter duty
Lunchtime	School Nurse Drop in (All Years) Nurses Office
Lunchtime	Geography Club with Mr Sheridan HUM4
Lunchtime	Badminton in Sports Hall
Lunchtime	Chess Club with Mr Cuthbert in the library—all years
Lunchtime	Tuesday Maths Lunchtime Drop in M1/BITS—Mrs Chopra
Lunchtime	A Level Math Club for KS4 Higher Maths Students, Mrs Gopal, M3
Lunchtime	Rowing in Main Hall with Henley Rowing Club
Afterschool—4.15pm	Maths Drop in, Miss Chopra, M1 (All Years)
Afterschool—4.10pm	Homework Club in the Library
Wednesday 20 March	Year 9 Assembly with Miss Bliss—AV Theatre—PPE Briefing
	8A on litter duty
Period 2 and 3	Year 11 Geography Fieldwork
	Year 10 Careers Trip to Kassam Stadium
Lunchtime	Garden/Eco Club, Miss Kirby, S1
Lunchtime	Gym— by invitation
Lunchtime	KS3 Netball
Lunchtime	Year 9 & 10—Maiden Erlegh Independent Project in BTEC
Afterschool—4:10pm	Homework Club in the Library



Continued...

Thursday 21 March	PSHE Day for Year 7-10
P2 and 3	Year 11 Geography Fieldwork - Mrs Hills Class
Lunchtime	Rowing in Main Hall with Henley Rowing Club
Lunchtime	Puzzle Pirates with Mrs Priest in M2
1:30pm Finish	Early Finish for All Years
Friday 22 March	
Lunchtime	Science Drop In with Miss Swayne in S3—all years
Lunchtime	Table Tennis in Main Hall
Lunchtime	History Club with Mrs Smith in HUMS1—now every week

Advance Notice

27 March	Duke of Edinburgh online Parent Meeting 7-8pm
28 March	Duke of Edinburgh Student Meeting in Training Suite 3:15 - 4:15pm
28 March	Last Day of Term—3:15pm finish
15 April	Back to School
20 April	CESA Secondhand Uniform and Promwear Sale 10am-1pm
22 April	CESA Mobile Phone and Ink Cartridge Collection Fundraiser Week
29 April	Year 10 PPE Week commences
06 May	Bank Holiday—School Closed
11 May	CESA Secondhand Uniform and Promwear Sale 10am-1pm

Borrowing PE Kit

All spare PE kit has been moved from student services to the PE department - if you need to borrow PE kit please see you PE teacher before your lesson.

Canteen

Week 2	Monday	Tuesday	Wednesday	Thursday	Friday
Meat Main	Chicken Tikka Masala with Basmati Rice Peas	Taco Tuesday	Southern Coated Chicken Burger with Wedges & Sweetcorn	Sausage & Mash with Peas & Gravy	Chip Shop Friday
Vegetarian Main	Quorn, Spinach & Chickpea Rogan Josh with Basmati Rice	Taco Tuesday	Vegi Quarter Pounder with Wedges & Sweetcorn	Macaroni Cheese with Garlic Bread & Salad	Vegan Sausage Rolls
Dessert of the Day	Cherry Crumble Custard Yogurt, Fresh Cut Fruit, Fruit Pot, Jelly	Jam Sponge Custard Yogurt, Fresh Cut Fruit, Fruit Pot, Jelly	Chocolate Brownie Chocolate Sauce Yogurt, Fresh Cut Fruit, Fruit Pot, Jelly	Pancakes & Syrup Yogurt, Fresh Cut Fruit, Fruit Pot, Jelly	Cake Selection Yogurt, Fresh Cut Fruit, Fruit Pot, Jelly
Pasta & Jackets	Pasta Bar with Sauces Jacket Potatoes Available daily	Pasta Bar with Sauces Jacket Potatoes Available daily	Pasta Bar with Sauces Jacket Potatoes Available daily	Pasta Bar with Sauces Jacket Potatoes Available daily	Pasta Bar with Sauces Jacket Potatoes Available daily
Grab 'n' Go	Assorted Grab & Go Items Available Daily	Assorted Grab & Go Items Available Daily	Assorted Grab & Go Items Available Daily	Assorted Grab & Go Items Available Daily	Assorted Grab & Go Items Available Daily

You can find all the canteen menus on the school website

[HERE](#)



**MAIDEN ERLEGH
CHILTERN EDGE**

NUTS AND TRACES OF NUTS CAN BE FOUND IN MANY ITEMS INCLUDING:

WE ARE A NUT FREE SCHOOL

CHOCOLATE/ SANDWICH SPREAD, SATAY CHICKEN, CHOCOLATE BARS/BOXES, AND BISCUITS.





Breakfast Available
From 8:15am

Danish Pastries	£1.30
Bacon Rolls	£1.50
Cereal	£1.30
Fresh Fruit Box	£1.30
Yogurt	£0.80
Toast	£0.50

A Reminder:

Please send your child to school with a refillable water bottle!

No energy, sugary or fizzy drinks in school.

House Points!!!

House Stars of the Week



MAIDEN ERLEGH
CHILTERN EDGE

Peppard



Jayden L 7A
29 Points

Abbey



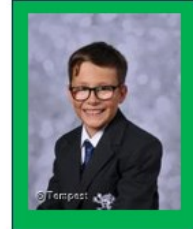
Riley F 7A
34 Points

Thames



Shree V 7A
36 Points

Chiltern



Leon C 7A
34 Points



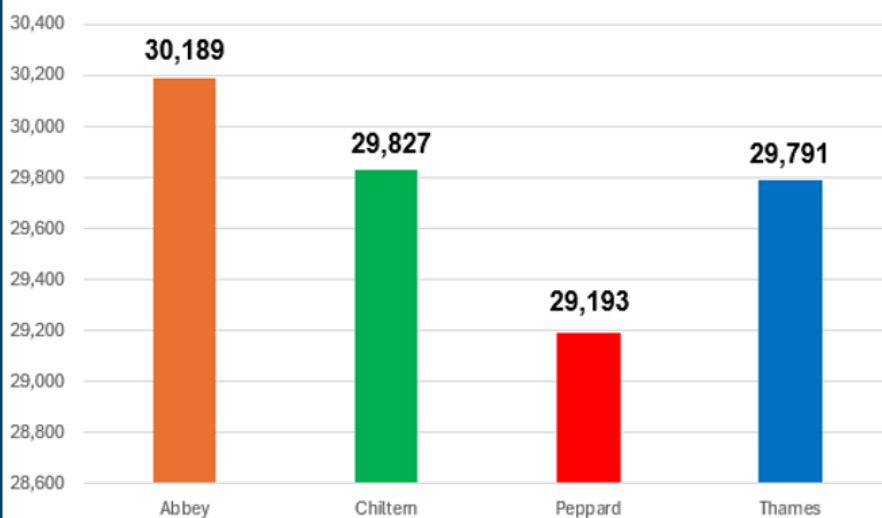
Overall House Standings!!!



MAIDEN ERLEGH
CHILTERN EDGE



House Points



TERM 1

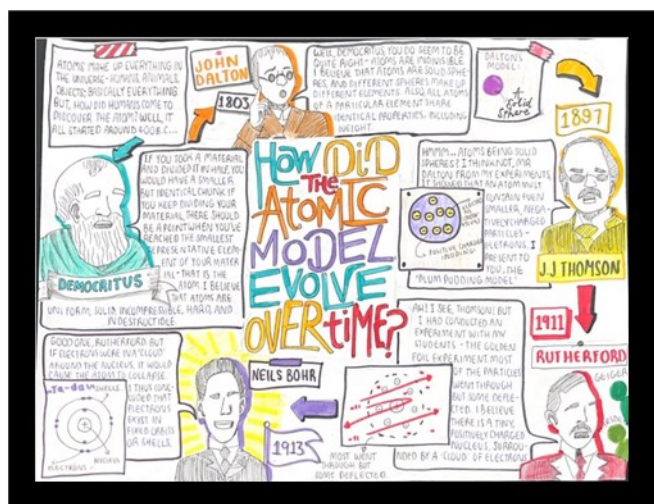
House Competition



Science Week House Poster Competition

Produce a poster on A4 or A3 paper, with the theme time. Think about the following for inspiration: What you do with your time? What does time mean to you? How do you measure time? What about time in space? Time travel?

Previous winners



What your entry will be judged on...

- **Creativity in approach** – Innovative angle on the content or creative interpretation of the theme – don't be afraid to think outside the box
- **Content** – Clear, accurate and informative about a STEM topic
- **Effective communication** – presented and communicated in an engaging way

2HP for every entry. Golden ticket to 4 winners who will have their work sent into the British science association. For more details visit [Poster competition - British Science Week](#). Submit your posters to Mrs Kirby by 22nd March, with full name and house name.


School Health Nurse

If your child is unwell, please refer to the NHS choices Live well site which can be found on the following link

<https://www.nhs.uk/live-well/is-my-child-too-ill-for-school/>

This will help you to decide if your child is too ill for school.

SCHOOL HEALTH NURSE
Lunchtime Drop-in
Every Tuesday Lunchtime
in Nurses Office



or to prebook an appointment, email
Jody.Coleman@oxfordhealth.nhs.uk,
speak to Miss Hibberd or ask at
Student Services



Term 4 Secondary School Health Nurse Team Newsletter
2024

Term 4 March 2024

[Go to this Sway](#)

Support the School Lottery
By clicking [HERE](#)
Super Draw for March with additional £1000
Sainsburys voucher up for grabs!!!

Enter our
Super Draw

Win a £1,000
Sainsbury's Voucher
OR £1,000 CASH PRIZE



- Tickets cost just £1 a week
- Chance to win up to £25,000
- Play weekly, or just play the Super Draw!
- Win £1,000 to spend in Sainsbury's



BUY TICKETS



MAIDEN ERLEGH
CHILTERN EDGE



YOUR
SCHOOL
LOTTERY



GambleAware

See website for Terms & conditions. Enter by 30/03/24

Easter Camps



 **Ages 4-17**

MUSICAL THEATRE EASTER CAMP

SING! **DANCE!** **ACT!**

A WEEK FULL OF MUSICAL THEATRE FUN TO MAKE FRIENDS, BUILD CONFIDENCE AND HAVE FUN!

8TH-12TH APRIL
SOUTH STREET ARTS CENTRE

 @anythinggoestheatre_youth  info@anythinggoestheatre.co.uk
 @anythinggoestheatre_youth  www.anythinggoestheatre.co.uk

Stagecoach
Reading Caversham

Easter Workshop - Show in a Week

Put on the show in just 5 days! Everything from casting to costume and performance in an exciting production week ending with the show.

8-12 APRIL 2024

Age: 6 - 18 year-olds
Time: 10.00am - 4.00pm **Performance:** 4.00pm on the last day
Cost: £145 (£125 siblings)
Venue: Highdown School, Berkshire, RG4 8LR

stagecoach.co.uk/readingcaversham 07894 951990

 **STAGE COACH**
Creative Courage For Life®

 **CHILDCARE VOUCHERS ACCEPTED**  **BOOK NOW**

Stagecoach Performing Arts schools are operated under franchise and are independently owned by their Principals. Stagecoach and Creative Courage For Life are registered trademarks of Stagecoach Performing Arts Limited.



 **Training for all young performers!**

Minis!

3.5-6 Year olds
Sunday Classes
The Heights Primary Reading
10:00-1:15pm

Main School

7-11 & 12-17 Year olds
Sunday Classes
The Heights Primary Reading
10:00-1:15pm

SING! **DANCE!** **ACT!**

 info@anythinggoestheatre.co.uk  @anythinggoestheatre_youth
 www.anythinggoestheatre.co.uk  @anythinggoestheatre_youth

Sonning Common Youth Club @ MECE

WHAT'S ON FEB-MARCH

21ST AND 22ND FEB
FINGER KNITTING
FOOTBALL
MULTI SPORTS
CRAFTS

28TH AND 29TH FEB
MALTEASER TRAYBAKE
FOOTBALL
MULTI SPORTS

13th and 14th March
Mother's Day cards and crafts,
football, and
multi sports.

27th and 28th March
Easter Hunt,
football
and
multi sports.

6th and 7th March
make your own
pizza night, football
and
multi sports

20th and 21st March
Rice crispy cakes
and Easter cards

SONNING YOUTH CLUB COMMON

Easter Event April 2024

Schedule

2nd April Easter event
Come along and join in with some outdoor activities like football, multi sports and making snacks- Kidmore End Memorial Hall
1.30pm - 3.30pm

10th April Youth club with A twist
We will be using the memorial field to play football and multi sports and going to the local chip shop- Kidmore End Memorial Hall
5pm - 7pm

11th April Baking session
Come along and bake some marvellous bakes. There will be a prize for the best bake- Sonning Common Village Hall
1.30pm - 3.30pm

All the above events are totally free but please book on by emailing to your right.
Anyone aged from 10 years old to 16 years old are welcome.

For more info email:
youthleader@sonningcommonparishcouncil.gov.uk

COMMUNITY FUND

SONNING YOUTH CLUB COMMON

Did you know you can hire school spaces?

We have a variety of spaces available to hire around the school which are used by local groups including a choir, football clubs, badminton clubs, a dance school and basketball club. Please get in touch on meceoffice@maidenerleghtrust.org if you are interested in hiring any of the spaces below:

Sports Hall

Main Hall with stage

AV Theatre

Classrooms

Design Technology Room

Computer Rooms

Football/Rugby Pitch

Drama Studio

Dance Studio

Facilities hire charges can be found on the website [HERE](#)



Buses After School

Please be aware that the later school bus which departs from outside the school at 16:22 now runs on Tuesdays, Wednesdays and Thursdays only.

On Mondays and Fridays students can walk down Reades Lane towards Sonning Common and catch the 25 bus which departs at 16:25. The bus stop is located on Wood Lane opposite the junction with Reades Lane.

Letters Home This Week

Please Click [HERE](#) for Whole School & Year Group Letters on our website.

