



MAIDEN ERLEGH
CHILTERN EDGE

Student Leadership

26-27

Why?



MAIDEN ERLEGH
CHILTERN EDGE

“Involvement in leadership and student voice activities can improve **students’** and pupils’ **learning** as well as helping them to **develop** the **skills** and **traits** needed for **success** outside of the classroom” - *SSAT, 2022*

5 REASONS WHY YOU SHOULD RUN FOR A STUDENT LEADERSHIP POSITION.

1. Develop leadership skills.



2. Experience working on a team.



3. Gain valuable soft skills.

4. Network.



5. Learn about yourself.



6. As a bonus:
Have fun!

Character Education at MECE:



MAIDEN ERLEGH
CHILTERN EDGE

Which of our character traits would you be applying?



Aim high



Be inclusive



Work together

Leadership

Fairness

Trustworthy

Volunteering

Respect

Community awareness

Resilience

Equality

Teamwork

Motivation

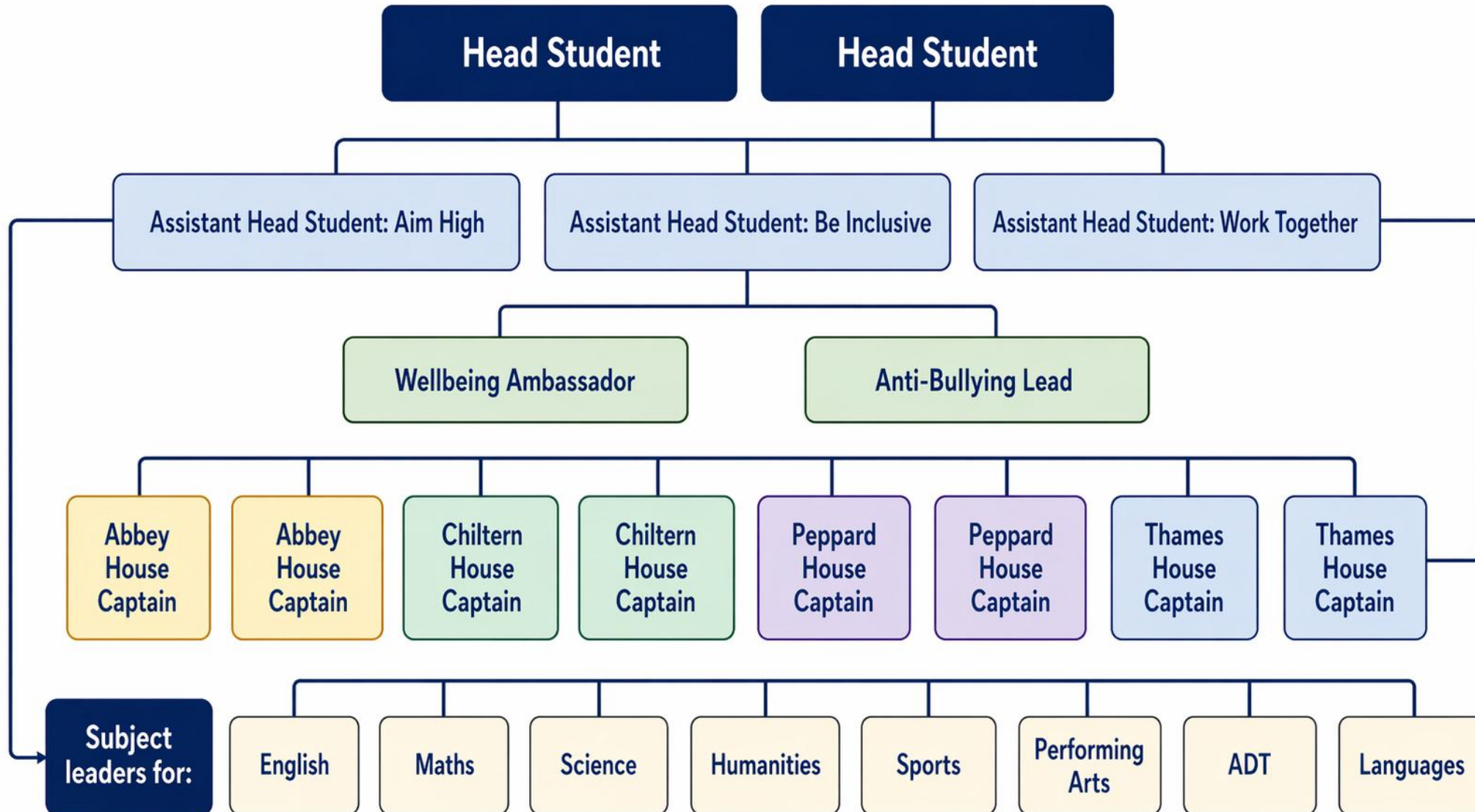
Empathy

Citizenship

Senior Leadership Roles at MECE:



MAIDEN ERLEGH
CHILTERN EDGE





Leadership Roles:

- Head Student x2
- Assistant head-student x 3
- Wellbeing Ambassador
- Anti-Bullying Lead
- House Captains (x2 per house)
- Subject Leaders x1
 - *English*
 - *Maths*
 - *Science*
 - *Humanities*
 - *Sports*
 - *Performing Arts*
 - *ADT*
 - *Languages*

Head Students:



MAIDEN ERLEGH
CHILTERN EDGE

- Positive role model
- Enthusiastic and committed to the school
- Lead the school council
- Attend events (Remembrance Sunday, Open Evenings, Shows etc.)
- Speeches
- Liaise and converse with students, staff & wider community
- Support with the planning/running of events & initiatives – including assemblies
- Lead, support & inspire peers
- Contribute to the termly 'MECE Matters' write up & Student Bulletin

Assistant Head-Students:



MAIDEN ERLEIGH
CHILTERN EDGE

1. Aim High – working closely with Mrs Hills around curriculum, extra-curricular opportunities etc.
2. Be Inclusive – working closely with Miss Cheeseman around belonging, wellbeing etc.
3. Work Together – working closely with Mr Clark around school culture, school events, the house system etc

With the same person specification as the Head Students.

Wellbeing Ambassador & Anti-bullying Lead:



MAIDEN ERLEGH
CHILTERN EDGE

- Positive role model
- Genuine interest for wellbeing and positive mental health
- Support the anti-bullying ambassador initiative
- Liaise and converse with students, staff & wider community
- Support with the planning/running of events & initiatives – including assemblies
- Contribute to the termly MECE Matters write up & student bulletin

Subject Leaders:



MAIDEN ERLEGH
CHILTERN EDGE

- Positive role model for subject
- Enthusiastic and committed to the subject
- Liaise and converse with students, staff & wider community
- Support with the planning/running of subject specific events & initiatives – including assemblies
- Lead, support & inspire peers
- Promote engagement with extra-curricular subject specific opportunities
- Contribute to the termly 'MECE Matters' write up for your subject & the student bulletin

House Captains:



MAIDEN ERLEGH
CHILTERN EDGE

- Positive role model
- Enthusiastic and committed to the House
- Liaise and converse with students, staff & wider community
- Support with the planning/running of house events & initiatives – including assemblies
- Lead, support & inspire peers
- Promote engagement with house competitions and initiatives
- Contribute to MECE Matters / Student Bulletin write up for your House



MAIDEN ERLEGH
CHILTERN EDGE

How to Apply

Letter of application



MAIDEN ERLEGH
CHILTERN EDGE

All roles require a letter of application.

Closing date: Monday 11th May

Head Students:



MAIDEN ERLEGH
CHILTERN EDGE

- Write a formal letter of application (this should outline why you are applying, relevant experience and personal attributes)
- Interview
- Speech – 2–3 minutes
- Student voting
- Staff voting

Assistant-Head Students:



MAIDEN ERLEGH
CHILTERN EDGE

- Write a formal letter of application (this should say which assistant head position you are applying for, why you are applying, relevant experience and personal attributes)

Dependent on number of applications for Head student and Assistant Head-student:

- Interview
- Speech – 2-3 minutes
- Student voting
- Staff voting

Wellbeing Ambassador & Anti-bullying Lead:



MAIDEN ERLEGH
CHILTERN EDGE

- Write a formal letter of application (this should outline why you are applying, relevant experience and personal attributes)

We may choose to appoint directly from the letters, or we may choose to shortlist candidates and have an interview

Subject Leaders:



MAIDEN ERLEGH
CHILTERN EDGE

- Write a formal letter of application (this should outline why you are applying, relevant experience and personal attributes)

Heads of Department & Head of Year will review the letters of application.

We may choose to appoint directly from the letters, or we may choose to shortlist candidates and have an interview

House Captain:



MAIDEN ERLEIGH
CHILTERN EDGE

- Write a formal letter of application (this should outline why you are applying, relevant experience and personal attributes)

Heads of House will review the letters of application.

We will appoint directly from the letters.



Deadline:

Letters of application should be given to Miss Cheeseman on or before **Monday 11th May**

If you email your application this must be sent to: s.cheeseman@maidenerleghtrust.org - and you need to inform Miss Cheeseman that you have applied.

to be
inspired is great,

to
inspire

is
incredible