



**MAIDEN ERLEGH**  
CHILTERN EDGE

# PPE Reminders

# PPEs

- ▶ PPEs (or Pre Public Exams) are opportunities for you and us to see how you are getting on with your GCSE courses
- ▶ They also allow you to experience taking exams in the Main Hall (or Training Suite if you have agreed Access Arrangements) and sit multiple papers in a day
- ▶ They also allow you to practice completing exam papers under exam conditions
- ▶ You will sit ‘mock’ papers in each of your subjects (with the exception of Art, BTEC Sport & Youth Award)
- ▶ There will be an **extended Art Workshop** (p3,4 & 5 on Thursday)
- ▶ If you attend College or AP you **should still attend** during this week.
- ▶ This first round of PPEs will take place **27 April - 1 May:**
  - ▶ *The papers will include material from across the units you have studied in Y10*
  - ▶ *You will sit only an **Eng Lit** paper lasting 1h45*
  - ▶ *Maths papers will be the ‘normal’ length. Science papers will be 1h15 or 1h45.*
  - ▶ *All other exams will be 1 hour or 1h 30.*
  - ▶ *You will only sit one paper per subject except in Maths (2), Science (3) & French (2)*



# PPE Week

- ▶ Exams will take place in the Main Hall

*Students with access arrangements will be in the Training Suite.*

- ▶ Morning exams will start **BY** 9am

*Students should register with their tutor in the Quad promptly at 8.40 **BEFORE** heading to the Exam hall*

- ▶ Session 2 exams will start **BY** 11.30am

*Student should make their way promptly at the end of break to the Quad*

- ▶ Students will sit exams in all subjects **except:**

- ▶ Art & Design
- ▶ BTEC Sport
- ▶ Youth Award
- ▶ Triple Science (sort of!)

Mrs Reilly will meet with students who are taking exams in the Training Suite on Friday to show you whereabouts you are sitting.

Those of you doing French will have an Listening paper on Wednesday afternoon (2.15pm) in addition to the reading/writing paper earlier in the week

# Exam Timetable

A copy of this timetable will be in Google Classroom and pinned in ClassCharts Announcements .

There will be a 45m French Listening paper on Wednesday p5

A calculator is required for: Maths (paper 2), Sciences, Geography, Computing, D&T and Food Tech

	Monday 27 April	Tuesday 28 April	Wednesday 29 April	Thursday 30 April	Friday 1 May
Session 1 (8.45 start)	Maths (non-calculator) 1h 30	Biology 1h 15 /1h 45	English Literature 1h 45	Chemistry 1h 15 /1h 45	Physics 1h 15 /1h 45
<b>Break</b>					
Session 2 (11.30 start)	Option A 1h or 1h30	Maths (Calculator) 1h30	Option C (1h-1h30)	Option D (1h-1h30)	Option B (1h-1h30)
Students return to the remainder of Period 4, have lunch and Period 5 runs as timetabled.					

P5 - French listening

**Option A (Mon p2/3)**  
French, Food, History, Sport\*, YA\*

**Option B (Fri p4/5)**  
Food, Geog, Sport\*, Triple Science\*

**Option C (Thur p2/3)**  
Food, History, Geog, Music, D&T

**Option D (Thur p4/5)**  
Food, Geog, Computing, Drama, Art\*

# Additional Information

You will be expected to adhere to JCQ regulations before, during and after the exams. Details of these can be found on the link shared with parents and in the Google Classroom

You are expected to wear full and correct school uniform for the duration of the PPEs

When you don't have an exam you will be in your **regular timetabled lessons**

If you are unwell and unable to attend school you will sit the exams upon your return. If you are late to an exam you will be admitted and, where possible, provided with the time to complete the exam fully.

Mobile phones, earphones and watches are **NOT allowed** in the exam hall.

Poor behaviour within the exam rooms will not be tolerated

If you go to College/AP you should still attend - we will slot missed papers in to other gaps

You must be prepared for the exams - know what equipment you need / are allowed!

Results will be internally marked and moderated and returned to you after half term. Where there is significant underperformance you can expect to be asked to re-sit a paper.



MAIDEN ERLEGH  
CHILTERN EDGE

# Student Leadership

26-27

# Why?



MAIDEN ERLEGH  
CHILTERN EDGE

“Involvement in leadership and student voice activities can improve **students’** and pupils’ **learning** as well as helping them to **develop** the **skills** and **traits** needed for **success** outside of the classroom” - *SSAT, 2022*

# 5 REASONS WHY YOU SHOULD RUN FOR A STUDENT LEADERSHIP POSITION.

1. Develop leadership skills.



2. Experience working on a team.



3. Gain valuable soft skills.

4. Network.



5. Learn about yourself.



6. As a bonus:  
Have fun!

# Character Education at MECE:



MAIDEN ERLEGH  
CHILTERN EDGE

*Which of our character traits would you be applying?*



*Aim high*



*Be inclusive*



*Work together*

Leadership

Fairness

Trustworthy

Volunteering

Respect

Community awareness

Resilience

Equality

Teamwork

Motivation

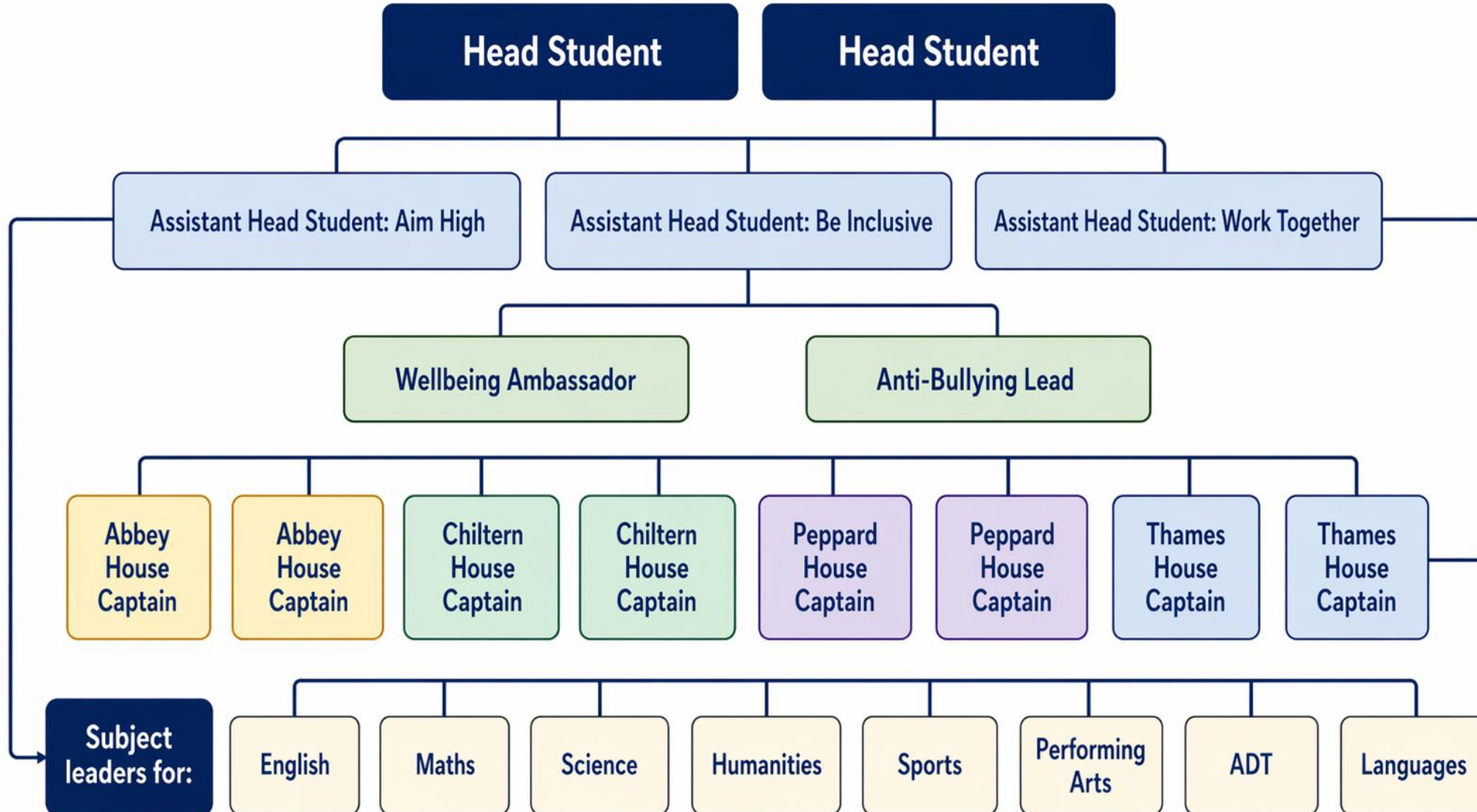
Empathy

Citizenship

# Senior Leadership Roles at MECE:



MAIDEN ERLEGH  
CHILTERN EDGE





# Leadership Roles:

- Head Student x2
- Assistant head-student x 3
- Wellbeing Ambassador
- Anti-Bullying Lead
- House Captains (x2 per house)
- Subject Leaders x1
  - *English*
  - *Maths*
  - *Science*
  - *Humanities*
  - *Sports*
  - *Performing Arts*
  - *ADT*
  - *Languages*

# Head Students:



MAIDEN ERLEGH  
CHILTERN EDGE

- Positive role model
- Enthusiastic and committed to the school
- Lead the school council
- Attend events (Remembrance Sunday, Open Evenings, Shows etc.)
- Speeches
- Liaise and converse with students, staff & wider community
- Support with the planning/running of events & initiatives – including assemblies
- Lead, support & inspire peers
- Contribute to the termly 'MECE Matters' write up & Student Bulletin

# Assistant Head-Students:



MAIDEN ERLEIGH  
CHILTERN EDGE

1. Aim High – working closely with Mrs Hills around curriculum, extra-curricular opportunities etc.
2. Be Inclusive – working closely with Miss Cheeseman around belonging, wellbeing etc.
3. Work Together – working closely with Mr Clark around school culture, school events, the house system etc

With the same person specification as the Head Students.

# Wellbeing Ambassador & Anti-bullying Lead:



MAIDEN ERLEIGH  
CHILTERN EDGE

- Positive role model
- Genuine interest for wellbeing and positive mental health
- Support the anti-bullying ambassador initiative
- Liaise and converse with students, staff & wider community
- Support with the planning/running of events & initiatives – including assemblies
- Contribute to the termly MECE Matters write up & student bulletin

# Subject Leaders:



MAIDEN ERLEGH  
CHILTERN EDGE

- Positive role model for subject
- Enthusiastic and committed to the subject
- Liaise and converse with students, staff & wider community
- Support with the planning/running of subject specific events & initiatives – including assemblies
- Lead, support & inspire peers
- Promote engagement with extra-curricular subject specific opportunities
- Contribute to the termly 'MECE Matters' write up for your subject & the student bulletin

# House Captains:



MAIDEN ERLEGH  
CHILTERN EDGE

- Positive role model
- Enthusiastic and committed to the House
- Liaise and converse with students, staff & wider community
- Support with the planning/running of house events & initiatives – including assemblies
- Lead, support & inspire peers
- Promote engagement with house competitions and initiatives
- Contribute to MECE Matters / Student Bulletin write up for your House



MAIDEN ERLEGH  
CHILTERN EDGE

# How to Apply

# Letter of application



MAIDEN ERLEGH  
CHILTERN EDGE

All roles require a letter of application.

Closing date: Monday 11th May

# Head Students:



MAIDEN ERLEGH  
CHILTERN EDGE

- Write a formal letter of application (this should outline why you are applying, relevant experience and personal attributes)
- Interview
- Speech – 2–3 minutes
- Student voting
- Staff voting

# Assistant-Head Students:



MAIDEN ERLEGH  
CHILTERN EDGE

- Write a formal letter of application (this should say which assistant head position you are applying for, why you are applying, relevant experience and personal attributes)

Dependent on number of applications for Head student and Assistant Head-student:

- Interview
- Speech – 2-3 minutes
- Student voting
- Staff voting

# Wellbeing Ambassador & Anti-bullying Lead:



MAIDEN ERLEIGH  
CHILTERN EDGE

- Write a formal letter of application (this should outline why you are applying, relevant experience and personal attributes)

We may choose to appoint directly from the letters, or we may choose to shortlist candidates and have an interview

# Subject Leaders:



MAIDEN ERLEGH  
CHILTERN EDGE

- Write a formal letter of application (this should outline why you are applying, relevant experience and personal attributes)

Heads of Department & Head of Year will review the letters of application.

We may choose to appoint directly from the letters, or we may choose to shortlist candidates and have an interview

# House Captain:



MAIDEN ERLEIGH  
CHILTERN EDGE

- Write a formal letter of application (this should outline why you are applying, relevant experience and personal attributes)

Heads of House will review the letters of application.

We will appoint directly from the letters.



# Deadline:

Letters of application should be given to Miss Cheeseman on or before **Monday 11th May**

If you email your application this must be sent to: [s.cheeseman@maidenerleghtrust.org](mailto:s.cheeseman@maidenerleghtrust.org) - and you need to inform Miss Cheeseman that you have applied.

to be  
inspired is great,

to  
inspire

is  
incredible