

MECEmatters

Issue 2 ♦ December 2019



Reades Lane, Sonning Common, Reading, RG4 9LN Tel: 0118 9721500

Message from Richard Hawthorne Acting Head of School

As we approach the Christmas break I would like to start with some messages of thanks. Firstly, I would like to publicly express my gratitude to all the staff here at MECE; their dedication to and unwavering ambition for our students is a constant source of inspiration. Of course, the support from our families and community is essential, so my thanks to all of you for continuing to work with us to deliver the best we can. We are also ably supported and challenged by the Maiden Erlegh Trust whose work, although often less visible to the outside world, is nonetheless an invaluable part of our development as a school. The same could also be said of CESA, who also work behind the scenes to raise money and support the school and I would also extend my sincere gratitude to all involved with our parents' association. Finally, I would like to thank all our students who make MECE the truly great place it is.

At the end of a term, we sometimes bid a few farewells so I would like to offer our best wishes to Mr Ford and Miss Hall, whose contracts end with us at the end of December, also to Mrs Marley and Miss Grindey who departed earlier in the term.

In January, we will be welcoming Mr Hartley as Headteacher, together with Miss Benham as Assistant Headteacher, Mrs Chopra as Head of Maths and Miss Mallon as a teacher of Maths. These are fantastic appointments and I am glad to welcome them to the '#MECEfamily'!

CALENDAR

23 December - 3 January	Christmas Holiday
6 January	INSET Day
15 January	Swimming Gala
28 January	Wicked The Musical Trip
4 February	Boy Blue Entertainment
4 February	Careers Fair @ MES
7 February	Y11 H&SC Exam
12 February	Trip to 'SIX'
14 February	PE Reward Trip
26 February	Y9 Parents' Eve & Options
9 March	Henley Youth Festival
19 March	Dip/Polio. Men Vaccinations
24 March	Y8 Parents' Eve
25 March	Parliament Education Centre
4 - 12 April	Ski Trip

Looking back over the term there is much to celebrate and remember; you will find highlights inside this edition of MECEmatters, so read on!

Finally, from me, and as I hand over the reins, a last personal thank you for the support so many in the community have shown for the school and myself since September.

I wish you all a restful Christmas break and New Year.

Humanities Spotlight—MECE is going to the polls!



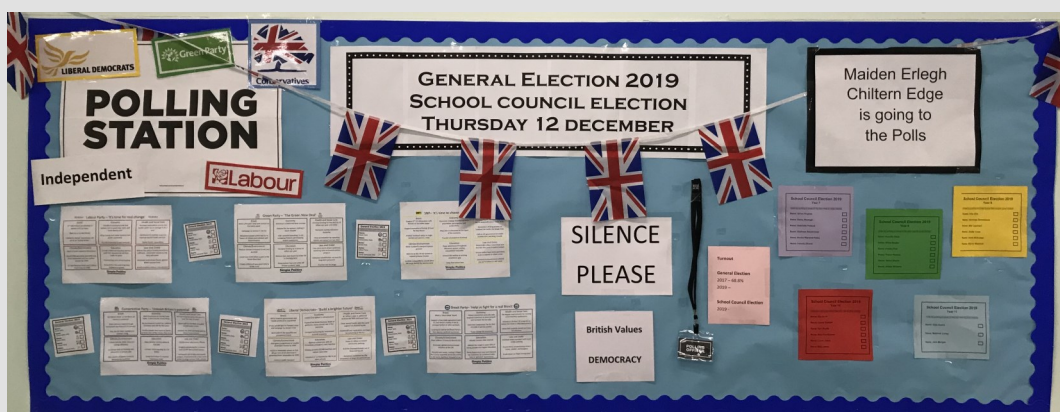
Yesterday, 12 December, Maiden Erlegh Chiltern Edge ran a School Council Election to tie in with the UK's General Election. The aim is to not only engage students with the General Election and the voting process but also develop the strength of student leadership within the school. The ballot results will be announced later today.

Form representatives were given the opportunity to produce flyers to outline their proposals and reasons for voting for them. A good opportunity to show off their persuasive writing skills!

As democracy is at the heart of our British values it is hoped that this School Council Election will empower, engage, promote and educate our students about the election process and have a greater understanding of how citizens can influence decision-making through the democratic process.

We are also pleased to announce that later in the year (25 March) some students will have the opportunity to visit the UK Parliament where they will experience a tour and workshop focusing on representation and voting.

Good luck to all the candidates and we shall reveal the results and make up of the MECE School Council in the next newsletter!



Modern Foreign Language

KS3

Year 7 have been learning grammar through re-writing a verse of a song. They can give opinions about simple things and activities as well as basic information about themselves and can recognise key questions and give the answers. A great start!

Year 8 will be able to help you recognise places around a town in France and can describe their town, house and bedroom. They have learnt key language, which will come up again and again as they go through the years.

We have seen some lovely presentations about families in Year 9—it's always interesting to see what the students choose to write about (we did say it doesn't have to be true!) and a few put a lot of effort in by finding photos and pictures. This is really great to see.



KS4

Year 10 have made an excellent start to the GCSE course. They continue to prove themselves to be committed, diligent learners with a genuine appetite for language learning. We have covered the topics of Family & Relationships and Technology, with plenty of grammar along the way! Our next topic is Home and the Local Region – what can they remember from year 8?

Year 11 students have now had an experience of what the summer may feel like with their mock exams. Well done to all those who put in a lot of hard work and there is definitely a feeling of wanting to help each other, enjoy their learning and move forwards.

The best way to learn vocabulary and phrases is to use them!

Please feel free to look in your child's book and test them on their words! Regular use of quizlet, writing words on post-it notes, making lists of unknown words and putting words into sentences will also help students feel more confident in the classroom.

PE Review

Year 7 Girls Football

The Y7 girls have made a fantastic start to their football careers at MECE. The girls won 7 and drew 2 of their 12 fixtures leaving them in 6th place in the league table out of 16 teams. Unfortunately, they missed out on a playoff place by 1 point. Well done to all the girls that have been involved on a fantastic first football season.



Swimming Gala - Wednesday 15th January at Radley College

If any competent swimmers from Y7-10 are interested in representing MECE at the swimming gala please let Mr Hunter as soon as possible
dhunter@maidenerleghchilternedge.co.uk

Triathlon

On Friday 8 November MECE held the annual South Oxfordshire School Games triathlon. It was a fantastic day with 70 students taking part. MECE students did themselves proud by all completing the 1.5k row, 2K cycle and 1.6K run in very respectful times. The results were as follows:

KS3 Girls = 5th

KS3 Boys = 5th

Year 10 boys = 6th

Year 11 Boys = 4th

A massive congratulation must go to Lachie in Y11 for winning overall in the KS4 Boys event with an amazing time of 17 minutes and 34 seconds!



On Tuesday 12 November MECE took 24 students to Gillotts School to run in the annual South Oxfordshire School Games cross country event. It was a rather cold and damp day which made for difficult running conditions but all students involved ran fantastically and were an asset to the school and PE department. Highlights included the KS4 boys team finishing 4th overall with Lachie finishing 3rd to qualify for the Oxfordshire School Games Winter Festival Final at Radley College.

Y11 Boys Rugby – Amazing Achievement

A massive congratulations to the Y10-11 rugby team who won their rugby league by beating Denefield 14-0 in the play-off final. The team have gone unbeaten all season scoring a phenomenal 211 points and only conceding 12 points. This is an outstanding achievement for a small cohort of boys and is thoroughly deserved after all the hard work they have put in over the last two seasons. Well done to all players involved, Charlie, Owen, James, Lachie, Isaac, Alex, Matt, Matthew, Luke, Nirvan, Dexter, Ben, Billy, Will, Oli, Shane, Connor and Oli.



Well done to the students below who have got through the trials and been selected for the following honours:



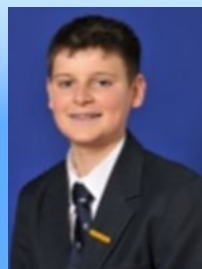
James— U14 Berkshire Rugby



Warren - U16s Vale of White Horse Football



Lachie - U16 London Irish and Berkshire Rugby Union



Will- U16 Oxfordshire Football



Alex — U16 Oxfordshire Rugby



@ChilternEdgePE

Art, Design and Technology

Art, Design & Technology
MECE
2019

It's been another busy term in ADT, but once again the student's work has been a shining beacon to brighten up these short dark days. I'm sure you'll agree that their creations are quite spectacular and their baking skills will come in handy this festive season.



Here are some amazing examples from Year 8's Great British Menu and Year 10's NEA Practice.



#KEEPAKING

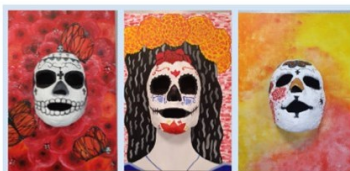
Film Club

This term we have watched many classic movies and Steven Universe. It's a great way to unwind on a Wednesday afterschool from 3.10-5 in the AV.



Art Club

Mainly this term we have focused on designing our own bags, see Eva's to the left.



GCSE Art students continued exploring cultures creating these face casts for Day of the Dead. While KS3 have been studying food, figure and Mark Heard.



#KEEPCREATING

Follow us on Instagram @MECEADT
mechilternedeadt



See some excellent examples of Year 8's pewter pendants, Year 7's wooden knots and Alex in Year 11's excellent Architecture model.



#KEEPMAKING

& that's an Enchilada! Have a great holiday from everyone in ADT!

Workshop and Courses

Maiden Erlegh Community Arts Spring Programme

To view a brochure regarding our Spring 2020 programme, visit our [website](#)

For information regarding booking and cost please [click here](#)

Parents' Forum

Thank you to all the parents who attended Parents' Forum on 7 November. The evening focused on Homework and Assessment and was a huge success.

We will be holding the next Parents' Forum in the New Year. Details will follow shortly.

Year 11 MOCK Interviews

The interviews took place yesterday (12/12/19)

Huge well done to all who took part and thank you to the staff from the Trust who volunteered their time to help.

Full write-up will appear in the next issue.



English

KS3 - Students have been working on literature based around 'War'. We feel that teaching young people about the great efforts made by our war heroes, was essential. We celebrate the rich culture offered in all types of medium and texts. Students have produced some outstanding work and have displayed excellent respect towards the topic of war. Many young people have shared their personal links to war through their experiences of family members who were and currently are still involved in protecting our country. We are pleased that the young people are so engaged. The study of 'The Merchant of Venice' by William Shakespeare, has allowed connecting to current societal affairs, we are sensitively exploring modern day political attitudes towards Anti-Semitism.

KS4 - Young people have been exploring Shakespeare's Macbeth and 19th century text: Dr Jekyll and Mr Hyde. The core skills being learnt are imperative to the upcoming GCSE examinations as well as enriching students' knowledge of British literature. Recently, ReadingBetweenTheLines theatre production showed 'Macbeth' in a very different light. Many students attended and commented on how excellent it

UKMT Intermediate Mathematical Challenge

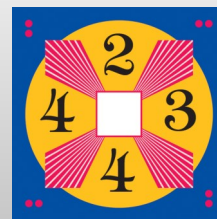
The mathematics department is very much looking forward to entering students for the upcoming Intermediate Maths Challenge. Practice preparations for this will start in the first week back in the New Year.

The Maths Challenge is run by the UK Mathematics Trust and is supported by the Institute and Faculty of Actuaries. The aim of the challenge is to stimulate students' mathematical thinking and test their problem solving skills in an accessible and yet challenging way.

The Intermediate Maths Challenge is primarily aimed at students in Y9 and 10 and will be sat in school on Thursday 6 February 2020. There will also be a Junior Maths Challenge later in the academic year and

The 24 Game

Years 7 & 8 have been battling it out to become champions of the 24 Game at MECE. Students have competed in teams of 2 to make a total of 24 from 4 numbers. Can you make 24 from the numbers on the card shown?



Congratulations to the overall winners: Corey (8C) and Jerry (8B). Close runners up were Oliver (7B) and Theo (7B). The champions will now try their luck against a staff team. Well done to all who took part!

YEAR 7

It's been another successful term for Year 7.

Peer mentoring has continued and it is great to see our Year 7's settling so well into the school community.

A large number of Year 7 Students have been attending clubs during lunch time and afterschool, it has also been brilliant to see some of them representing the school in sporting events.

This term saw the first of our Hot Chocolate Mornings, where 10 students were nominated by their form tutors for having had an exceptional start to life at Maiden Erlegh Chiltern Edge School. They were joined by Mr Hawthorne, our Head Girl, Head Boy, Charity Leader and Sports Captain and spent form time enjoying a hot chocolate along with other treats. Well done to the students who were invited. Form tutors are on the look out for the next group of students to nominate for the reward!

I hope the students enjoy some well-earned time off over the Christmas holidays and we look forward to another positive term as a year group.



How are my child's benchmarks set?

In the October edition of MECE Matters we gave some guidance about the assessment strategy at Maiden Erlegh School.

You have asked for further clarification about how benchmarks are actually set.

The brief guide "What does the report tell me?" stated:

The Benchmark (or target grade) is the aspirational grade that would put your child one grade above the average for students of their ability in their Year 11 GCSE exams.

In order to set a student and subject specific benchmark we use the statistical analysis provided by the Fischer Family Trust, a non-profit educational organisation that has been working nationally with School assessment data since it was established in 2001.

Using the prior attainment data generated at the end of primary school (KS2 SATS) and looking at outcomes for all students nationally in specific subjects with specific starting points FFT generate statistical estimates for students to achieve each grade on the 1-9 GCSE grading system. Schools can choose to use the estimates based on data from other similarly high performing schools.

These estimates are shared with students annually in the October student own target setting window. From these estimates we then determine a median grade, which is the grade that a student with their particular KS2 SATS scores is on average likely to achieve in a high performing school. As this grade is an average we then set an aspirational target that is one grade higher than this. This is called a benchmark grade on the student reports.

For a fuller explanation with some examples and further detail please go to the full article on the school [website](#).

Performing Arts

This year, the Performing Arts Department have been busy rehearsing with a very talented cast for our production of *Oliver!* We have been singing, dancing and acting – all in Cockney accents! The show is a huge effort every year from the students on the stage, but also from members of the school community. From set building in Tech to poster design, prop sourcing, costume making and every thing in between, it is a whole school event. Thank you to all those who have contributed in any way to this year's show, we look forward to seeing you in the audience! The show is on 17, 18 and 19 December and tickets are available via the school payment system, on the desk at Reception, or on the door. Tickets are priced at £4 for students/concessions and £7 for adults.



Chiltern Edge Orchestral Society

Did you know that there is an excellent local orchestra that meets every Tuesday at 7.30pm at Maiden Erlegh Chiltern Edge? We are a friendly and approachable orchestra that welcomes new members and tackles a varied and interesting repertoire with 2 concerts each year.

If you are interested in joining us (strings & brass particularly welcome) get in touch with Ruth on 01189 722164.



Careers News



We have had a very busy start to the new academic year in terms of our Careers provision at MECE. Students have taken part in different Careers related workshops.

- *Year 9 People Like Me workshop (boys)
- *The launch of Year 10 Work Experience
- *Adviza Appointments for all Year 11 students
- *The continuation of Careers Mentoring Programme
- *Year 8 DigiGirlz at Microsoft



Our careers provision provides a **differentiated and personalised learning programme** that is appropriate to the student's needs and stage of career learning, planning and development. It also provides **impartial advice and guidance** so that students are aware of the different destination routes available to them and how to get there as well as developing **work-ready skills** so that students achieve satisfaction in the world beyond secondary school. It also empowers students so that they embark on a **student-led** programme

Meeting Year 11

In the last week of November, Miss Davies (Executive Headteacher and CEO) and Ms Hanley (Trustee) were among a number of colleagues who met with each Year 11 student for a one-to-one discussion. The purpose of the meetings was to find out how they were doing, their plans for September and review strategies for their revision and wellbeing in the run up to the exams.

We were very impressed with the students – they were interesting, articulate and are aspirational for their studies and in many other areas. The overwhelming majority had already applied to sixth forms and/or colleges, with a number looking into apprenticeships. They were serious-minded and many had already put in place revision timetables and started a programme of practising exam questions as preparation for their PPEs. What came across loud and clear was that these youngsters are determined to work hard and appreciate the work of their teachers to help and guide them.

As the year goes forwards, there will be opportunities to attend booster and revision sessions but it is vital to remember that the most important thing is to attend and make the most of timetabled lessons. That is where the teaching, learning, practice and feedback happens. You can't revise things you haven't learned.

The other thing is to plan the build up to the exams so that students build in leisure and family time – cramming to the exclusion of any joy is not helpful. So start early!

Awards Evening



On Thursday 21 November the MECE community gathered for an evening of celebration and review of 2018-19. A packed hall welcomed back the Class of 2019 and their families as well as award winners throughout the school. We were delighted to have the company of members of our Governing body, Trustees and invited guests including the Henley Standard and the Sonning Common Magazine. The evening celebrated the wide range of success from all corners of the school and was punctuated by student performances on

piano, guitar and voice and with personal reflections from both current and former students. The Class of 2019 were recognised for their perseverance and dedication to studies and were warmly congratulated as they collected their GCSE certificates on stage. Prize winners from each of the departments, and the overall service to the School awards were presented with certificates, trophies and a keepsake book – chosen for them by teaching staff to reflect their achievement or talent. The evening was rounded by an inspiring and thought provoking address from guest speaker, Miss Davies where students were asked to explore their own aspirations and ensure they were not only aiming for great academic heights but personal and character achievements too. A huge thank you to all who attended and shared in the successes of students from across the school.



THANK YOU TO MR HAWTHORNE

On behalf of the staff and the Trust, I would like to thank Mr Hawthorne for his work as Acting Head of School this term.

Mr Hawthorne stepped in at short notice and has worked hard with staff, students and parents since September. As a result the school has come together and moved forwards again.

Running a school is a very complex thing and, unless you have done it, you cannot appreciate the number of things happening at any one time. In and amongst all of the day-to-day management here are just some of the things Mr Hawthorne has achieved this term:

- *Organising and running additional Open Mornings and an Open Evening.
- *Bringing in the new MECE Matters which you are reading now.
- *Planning and leading, with Miss Bliss, the first Parents' Forum.
- *Recruiting some amazing new staff eg: in maths and science.
- *Introducing new Trust monitoring systems in school.
- *Organising and leading professional development.

Most importantly, he has led the school during a period of transition with dignity and his trademark commitment to students and staff.

Thank you very much.

M Davies

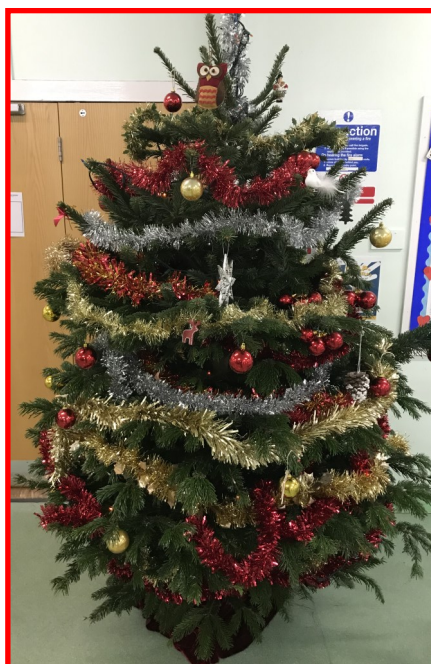
Executive Headteacher & CEO

A special thank you to
Playhatch Garden Centre
For generously donating our beautiful Christmas tree.
And thank you Mrs Foster, MFL,
for collecting the tree.

FACILITIES HIRE



We are delighted to be able to offer our facilities for hire to our local community.
[Click here for further information.](#)



TERM DATES 2019-20

Autumn Term

5 September - 25 October 2019

HALF TERM

4 November - 20 December 2019

Spring Term

6 January - 14 February 2020

HALF TERM

24 February - 3 April 2020

Summer Term

20 April - 22 May 2020

(8 May 2020 - Bank Holiday)

HALF TERM

1 June - 21 July 2020

Professional Development Days
(school closed to students)

3 September 2019

4 September 2019

18 November 2019

6 January 2020

29 January 2020

2 July 2020

ParentPay

Click on the ParentPay logo to login and register your account.

Any queries please email us at

ParentPay@maidenerleghchilternedge.co.uk



ParentPay®

Letters for Parents

www.maidenerleghchilternedge.co.uk/letters-for-parents/

[Click here to view recent communications](#)