

# Hinterland learning opportunities

How do we encourage students to widen their knowledge of Geography, History and RE beyond the classroom?



**MAIDEN ERLEGH**  
CHILTERN EDGE



[illegible]





## GEOGOGGLE BOX



What to watch:

When? Where?	Programmes
Mon/Tue 7/8 Sept BBC 1 + iplayer	Sue Perkins: Along the US-Mexico Border (Years 9-11) <b>9pm</b>
Netflix	Zac Efron's Down to Earth (12 rating)
BBC 1 iPlayer	David Attenborough's Extinction: The Facts Pick of the week!





## GOGGLE BOX



What to watch:

When? Where?	Programmes
BBC IPLAYER	Black + British: A forgotten history
BBC IPLAYER	HOLOCAUST MEMORIAL DAY

# Royal Geographical Society (RGS) Young Geographer of the Year 2020

 'The world beyond my window' 

How is your life influenced  
by different places?

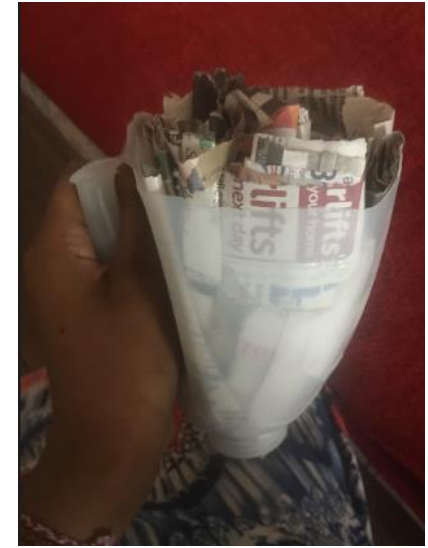
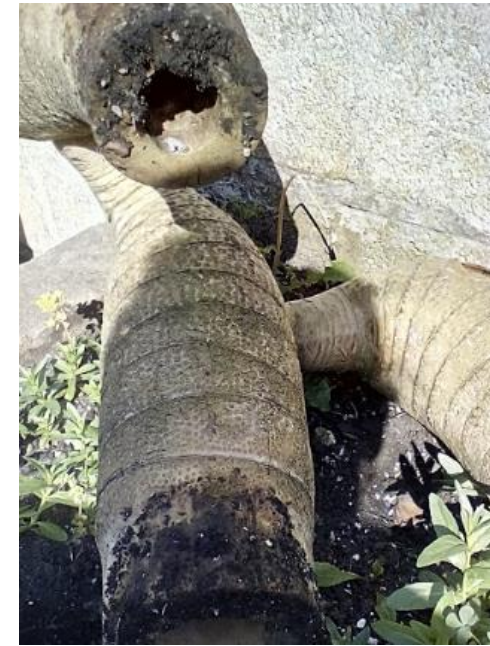
What geographical processes  
create and shape places?

How is your life connected to  
different places?

What is the human and physical  
geography of these places?

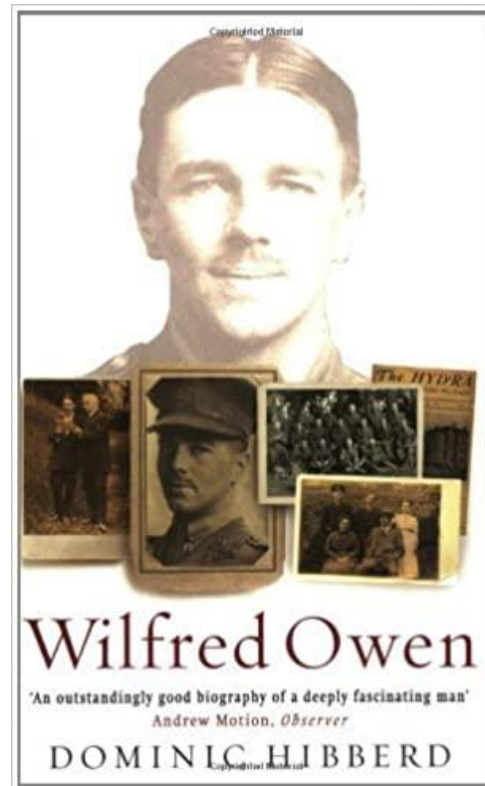


# Earth Day 2020





# Remembrance



Local history:  
Wilfred Owen

Thursday, 8 November, the school held its Annual Service of Remembrance, which included a number of poignant poems and music. Thanks to Jodi (Year 11) who performed a specially written piece inspired by the events of World War 2.

Students were asked to consider the importance and significance of the poppy. Staff and students observed a minute's silence.

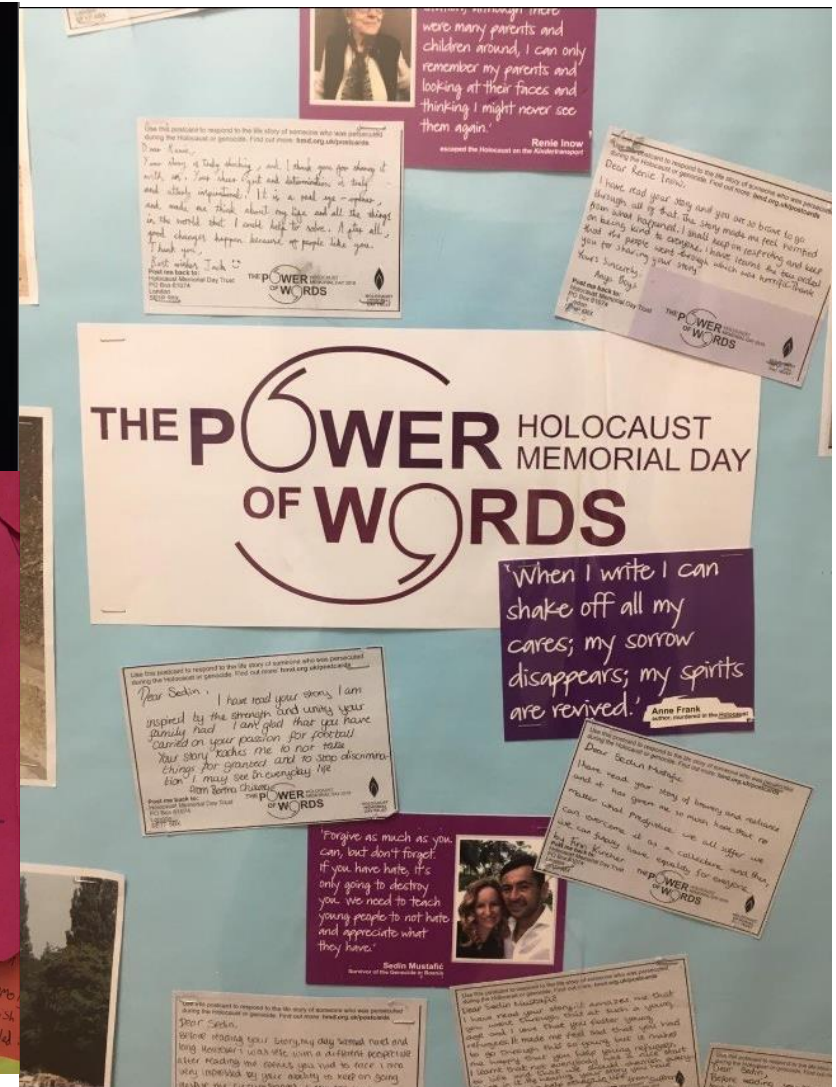
We paid particular tribute to former pupil Cyrus Thatcher who sadly lost his life in Afghanistan in 2009 as well as victims from World War 1 and World War 2 from the Kidmore End parish.

Thank you to Mark Yarwood who organised the creation of poppies for a beautiful display on the hall.





# Holocaust Memorial Day – 27<sup>th</sup> January





# Geography in the News

## How do I complete my Geography in the News homework?

Getting started  
Have a read of the web page you have been given for your *Geography in the News* homework. You could make notes using the [Cornell method of note-taking](#).

The Facts  
For this section, you need to retrieve information from the article. Don't copy, write your answers in full sentences in your own words.

The Links  
If you need help with the synoptic links part of your homework we've set up a page to guide you on [making synoptic links](#).

The Next Level  
This section of the Geography in the News homework requires you to do some further research. In our first homework, this requires finding out what the Indonesian Transmigration policy is. This will change in other homework.

Above and Beyond  
Above and beyond activities require you to be creating by developing something and/or applying your knowledge. This can sometimes require you to do further research into the topic. You'll probably also need to develop a plan of where you would install buoys and Beyond questions requires you to develop a plan of where you would install buoys for a global tsunami early warning system. To be able to do this you'll need to know where tsunamis can occur. As they typically occur along destructive plate margins you need to find out where they are located.

# Geography in the News

## Geography in the News 27 (2019/20)

Wider reading in Geography  
Geography in the News this week explores new plant-based bottles that will degrade in a year.  
<https://www.theaustralian.com.au/environment/2020/may/16/the-end-of-plastic-new-plant-based-bottles-will-degrade-in-a-year>  
TinyURL: <https://tinyurl.com/plant-bottles>

### Define It

To begin with, it will be very useful to know what the following terms mean. Write a definition for each:

- Sustainably grown crops
- Renewable chemicals
- Plant plastic
- Fossil fuels
- Plastic pollution
- Decompose

### The Facts

Complete the questions below or head over to [www.internetgeography.net/gttn27/](http://www.internetgeography.net/gttn27/) to complete the questions as a multiple-choice quiz.

1. Which multinational companies have backed a pioneering project to make 'all-plant' drinks bottles?
2. What is plastic traditionally made from?
3. What will be used to produce the new 'all-plant' bottles?
4. Where is the biochemicals company that plans to produce the 'all-plant' located?
5. Why has the project got the backing of major companies?
6. How many tonnes of plastic is made from fossil fuels each year?
7. How long can microplastics take to decompose completely?
8. How long would the plastic take to decompose using a composter?
9. When could be the product be on supermarket shelves?
10. How much plastic will the project initially produce?

internet geography

Did the quiz online? What was your score? /10  
[www.internetgeography.net/homework](http://www.internetgeography.net/homework)

## The Graph

Global plastics production, 1950 to 2015



### The Impacts

What are the impacts of plastic production?

Positive Impacts	Negative Impacts

### The Links

<https://www.internetgeography.net/homework/synoptic-links-in-geography/>  
How does this Geography in the News link to what you have previously studied in geography and/or what you already know? How does this link to other aspects of geography?

### The Next Level

'All-plant' plastic is the solution to the global plastic problem. To what extent do you agree with this statement?

## Evaluating a source in Geography

It is increasingly important to critically evaluate the information you use when studying geography. Information is more readily available to us now than ever before which is why it is so important to review your sources. When completing geographical research you need to ask yourself 'how reliable is this information?'. Even sources that appear to be reliable often have some form of bias behind them.

So, how do you spot the fake from reliable information? It's easy, put your source through the CRAAP\* analysis.

### Currency

When was the information written/updated/revised? Is the information up to date? Does the information represent current scientific thinking?

### Relevance

How much information is presented? Is it a detailed analysis? Is the reading level appropriate? e.g. not too simple and not too difficult.

### Authority

Who is the author/editor? What are their qualifications? Are they experts in the area of study? Does the author have support from experts in the field?

### Accuracy

Is the information accurate? Does the information match your understanding of the topic? Do other sources verify the claims made? Always check against other sources. Check to see if there is a bibliography included with citations (references) to other reliable sources.

### Purpose

Is there a clear purpose to the information? Is it stated? Is there any evidence of bias or sensationalism? Is the information clickbait (overly dramatic to grab your attention and encourage visitors to click on a link)? What is the purpose of the medium? What is their motivation for sharing this information? Are they stating facts, opinions or trying to persuade?

When looking for information, it may be appropriate to use popular works, or works with a certain bias in your research if you are presenting different opinions on a subject. However, it is important that you distinguish opinion from research and clearly represent your sources as what they are.

\*The CRAAP test is adapted from a video presentation by Western Libraries.